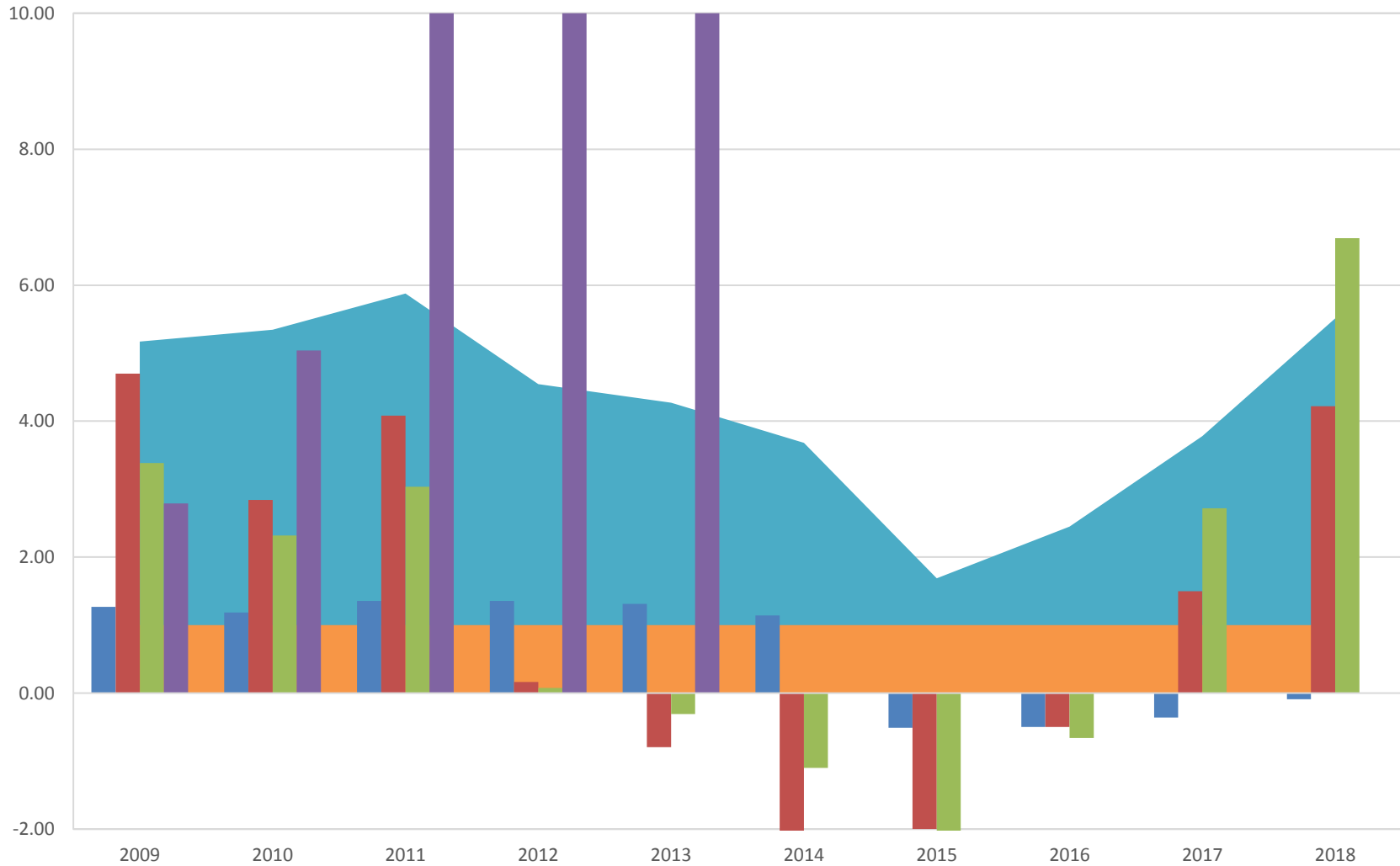
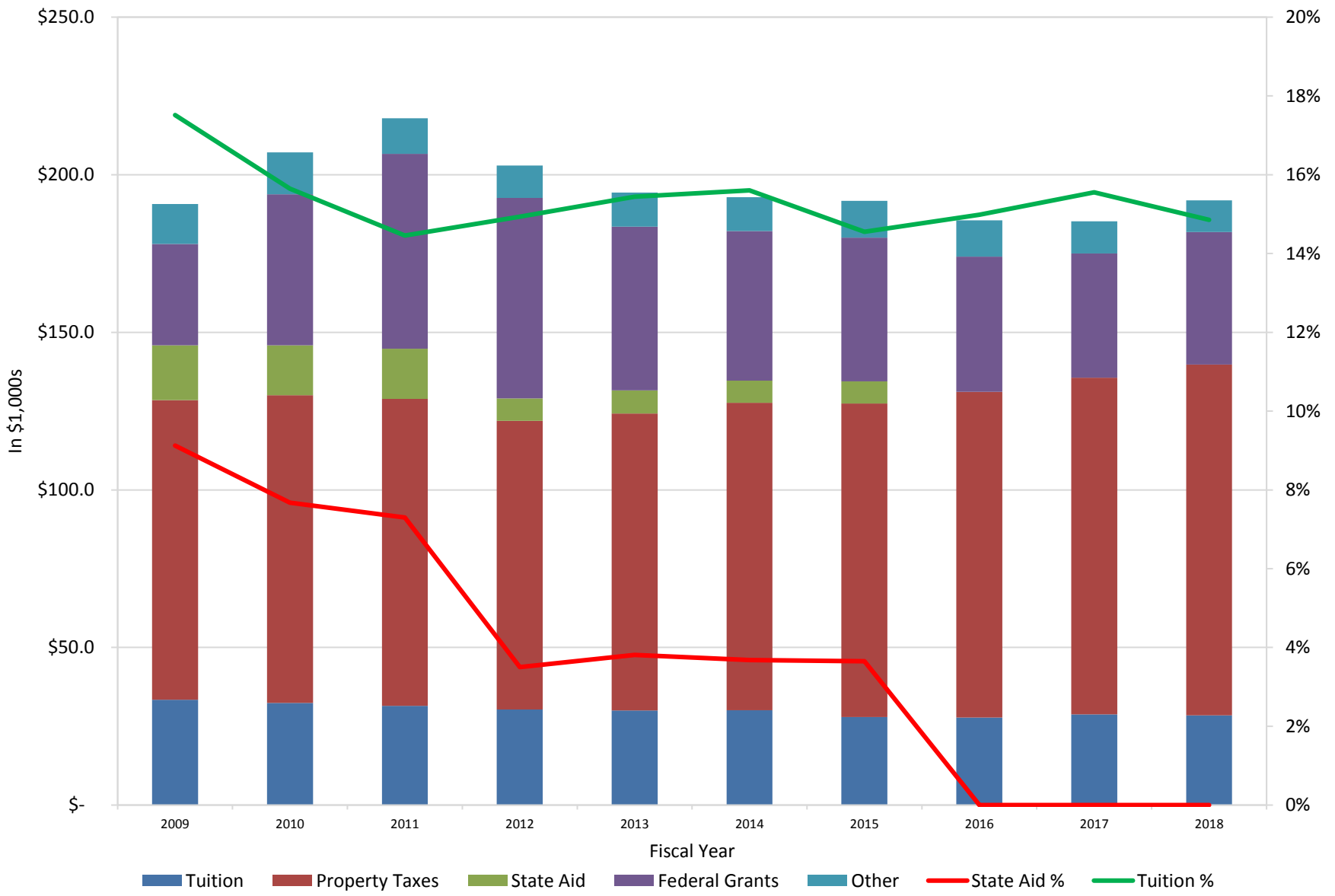


Financial Ratios vs. Benchmarks (>1.0 is above the low benchmark)

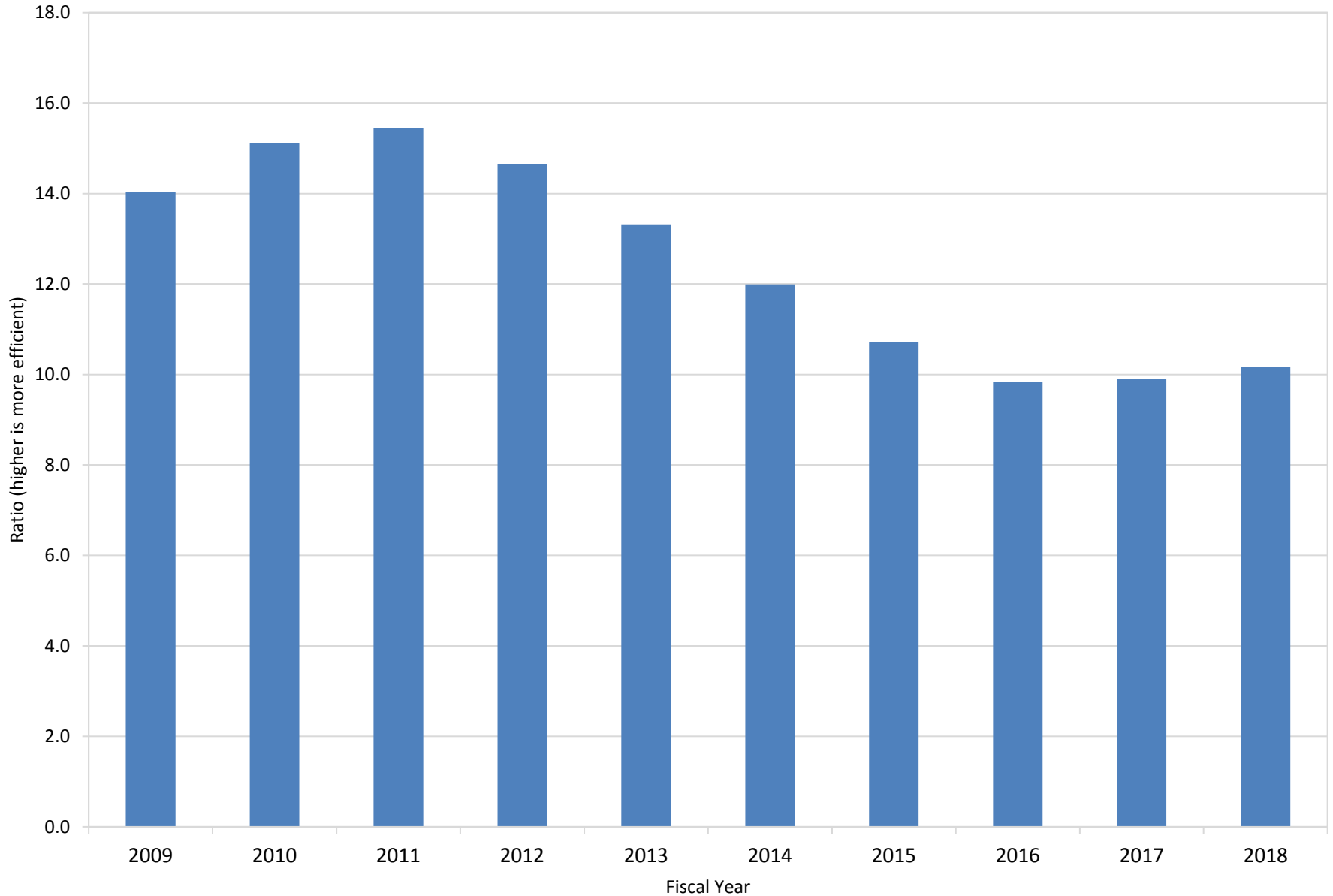


■ Composite Financial Index - with GASB 68 
 ■ Ratio Benchmark 
 ■ Primary Reserve 
 ■ Net Operating 
 ■ Return on Net Assets 
 ■ Viability

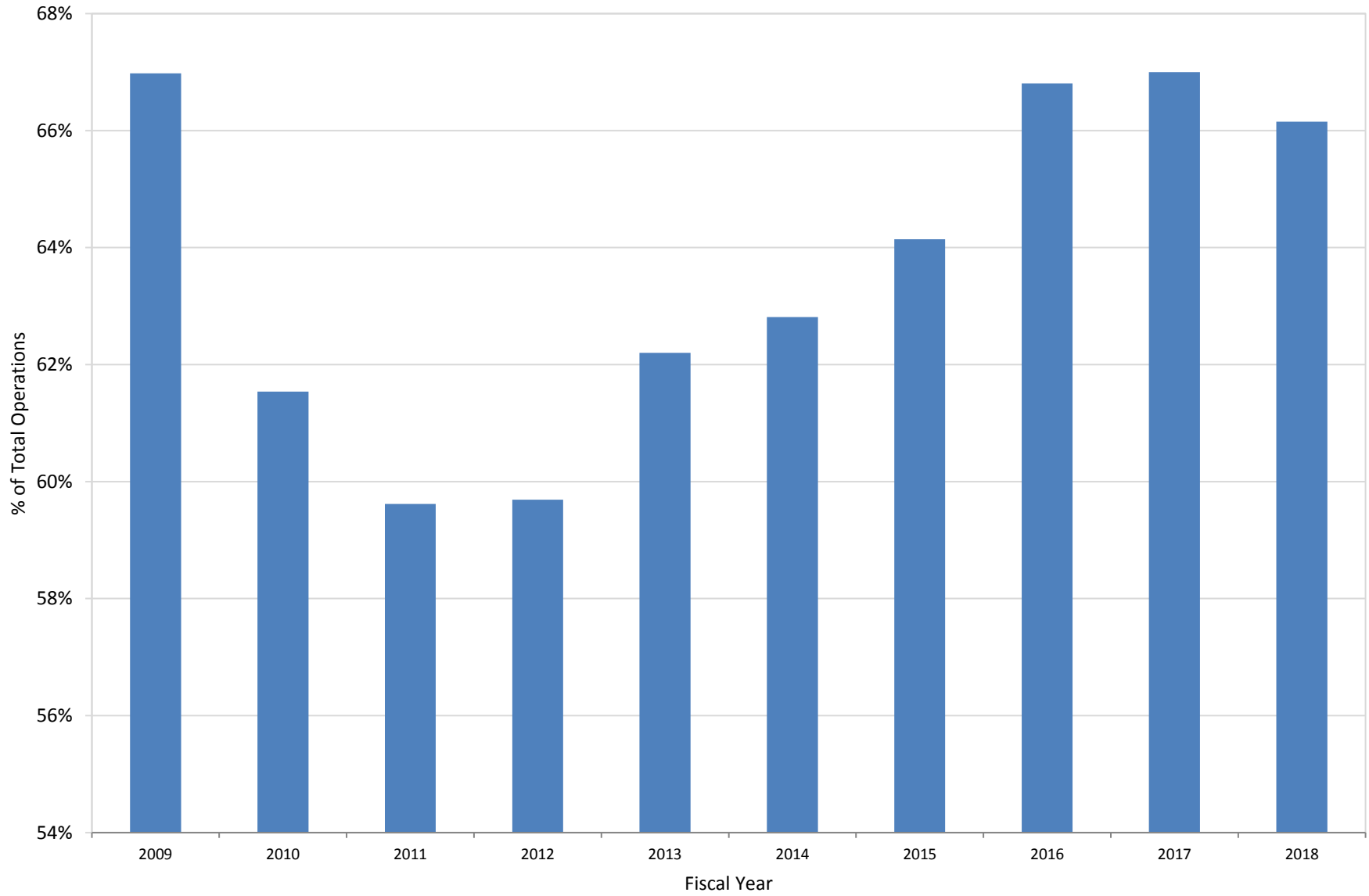
Revenues by Type (\$mil) and % of Total for Tuition and State Aid



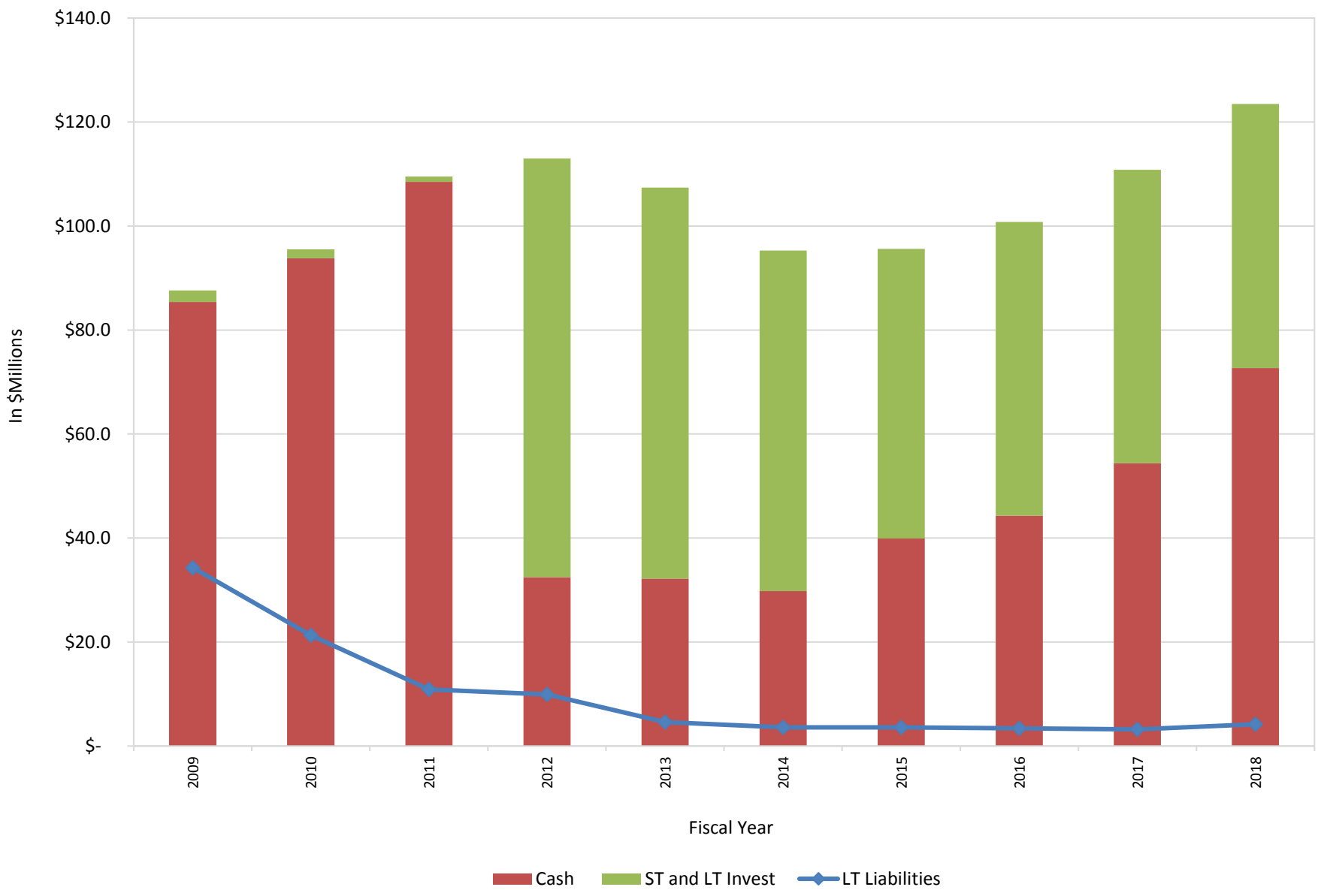
# FTSE per FT Employee



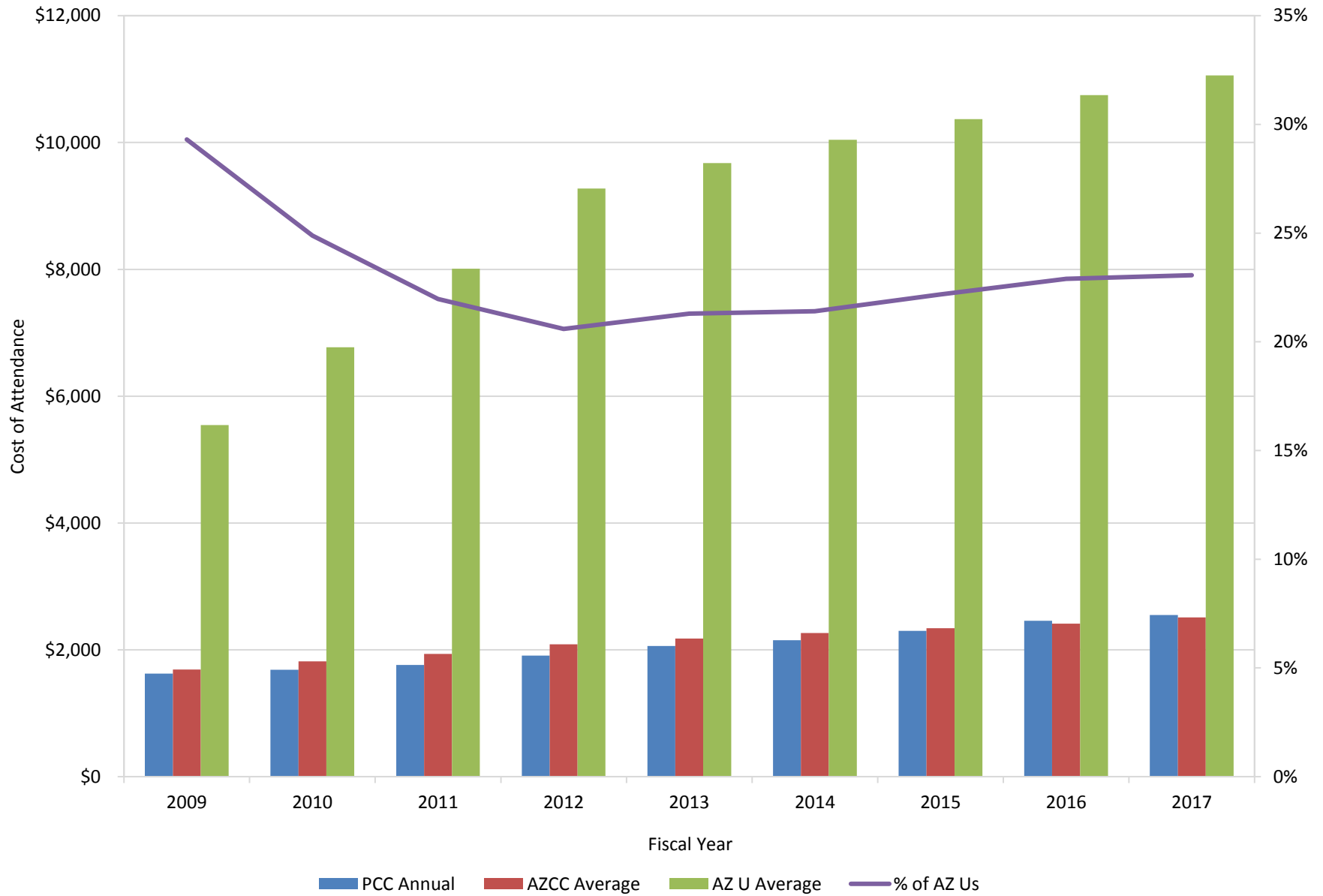
# Personnel Costs as % of Total Operations



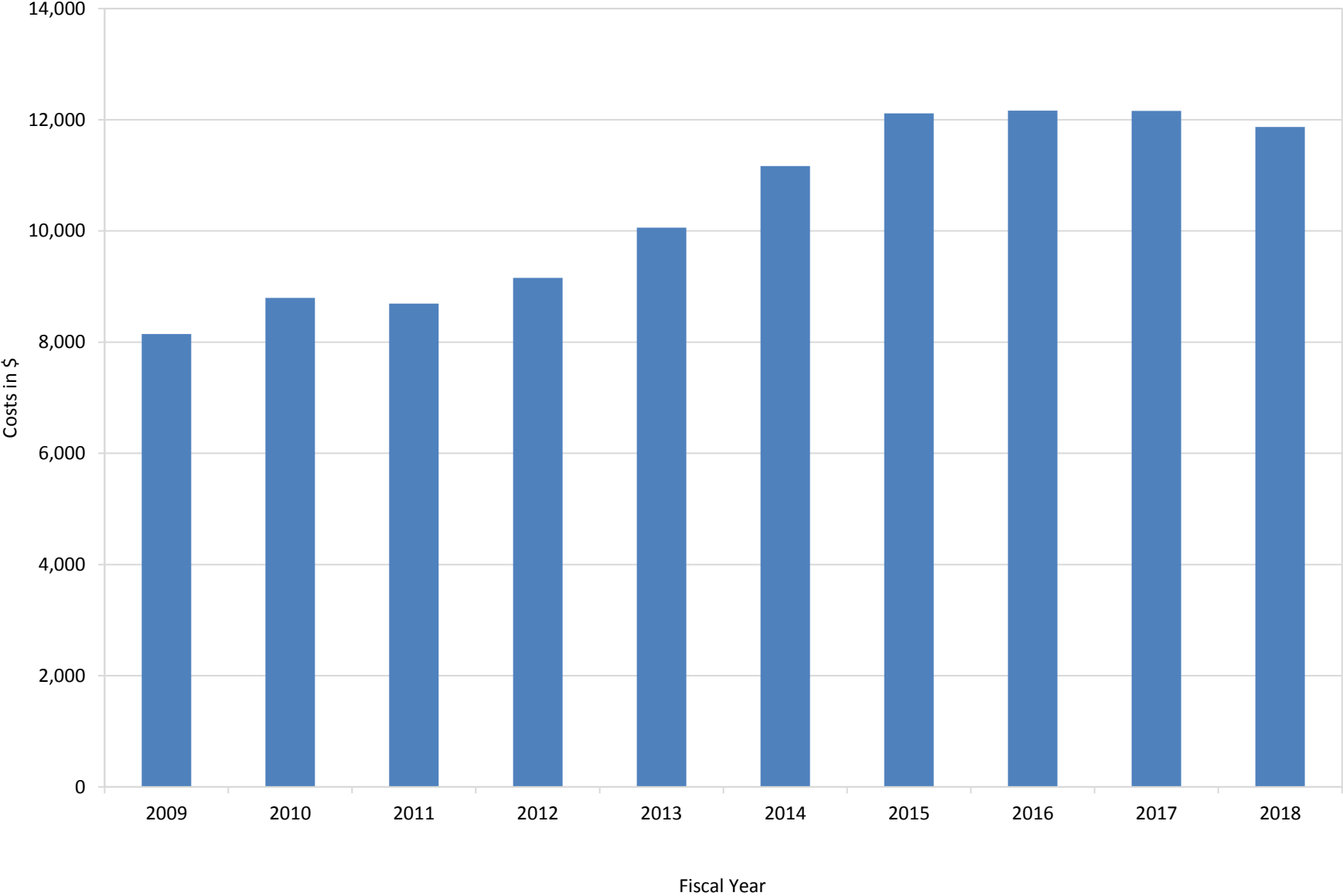
### Cash and Investments vs. Long Term Liabilities






### Cost of Attendance: PCC vs. Other AZ CCs and the Universities



### Total Costs per FTSE



**Key**

<u>Color</u>	<u>Level of Concern</u>	<u>Direction</u>	<u>Trend Indicator</u>
<b>Red</b>	Significant		Increase
<b>Orange</b>	Moderate		Maintenance
<b>Green</b>	Minimal to No		Decrease