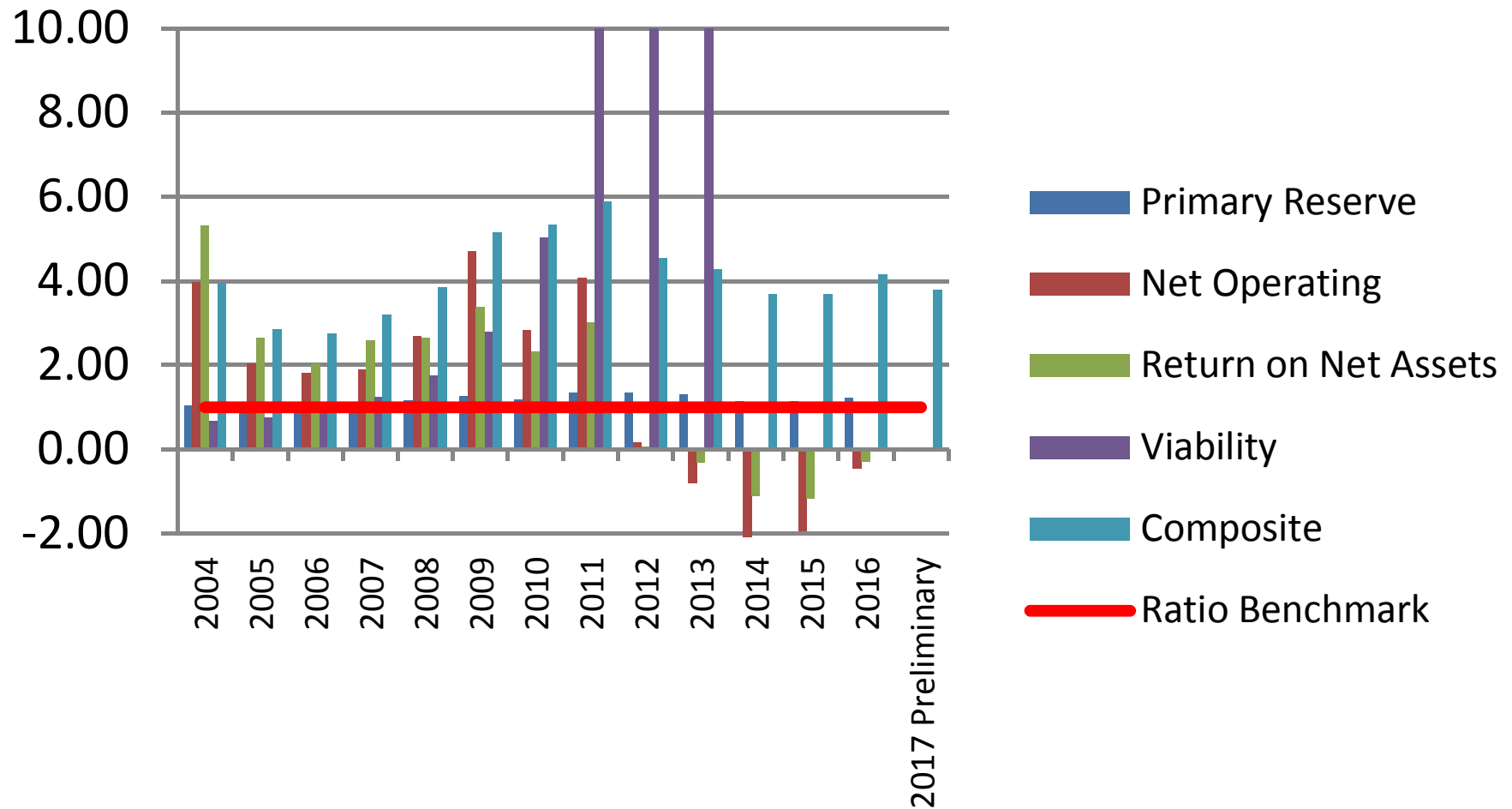
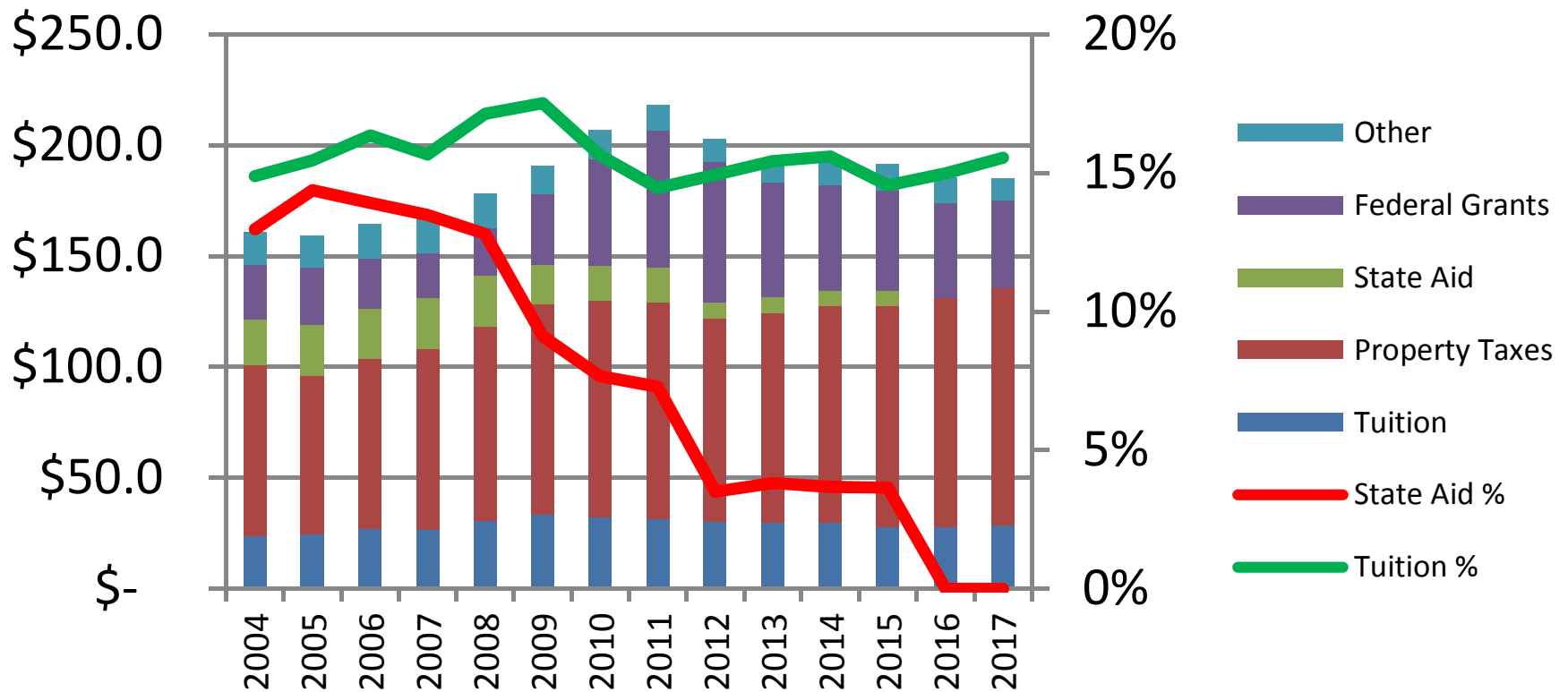


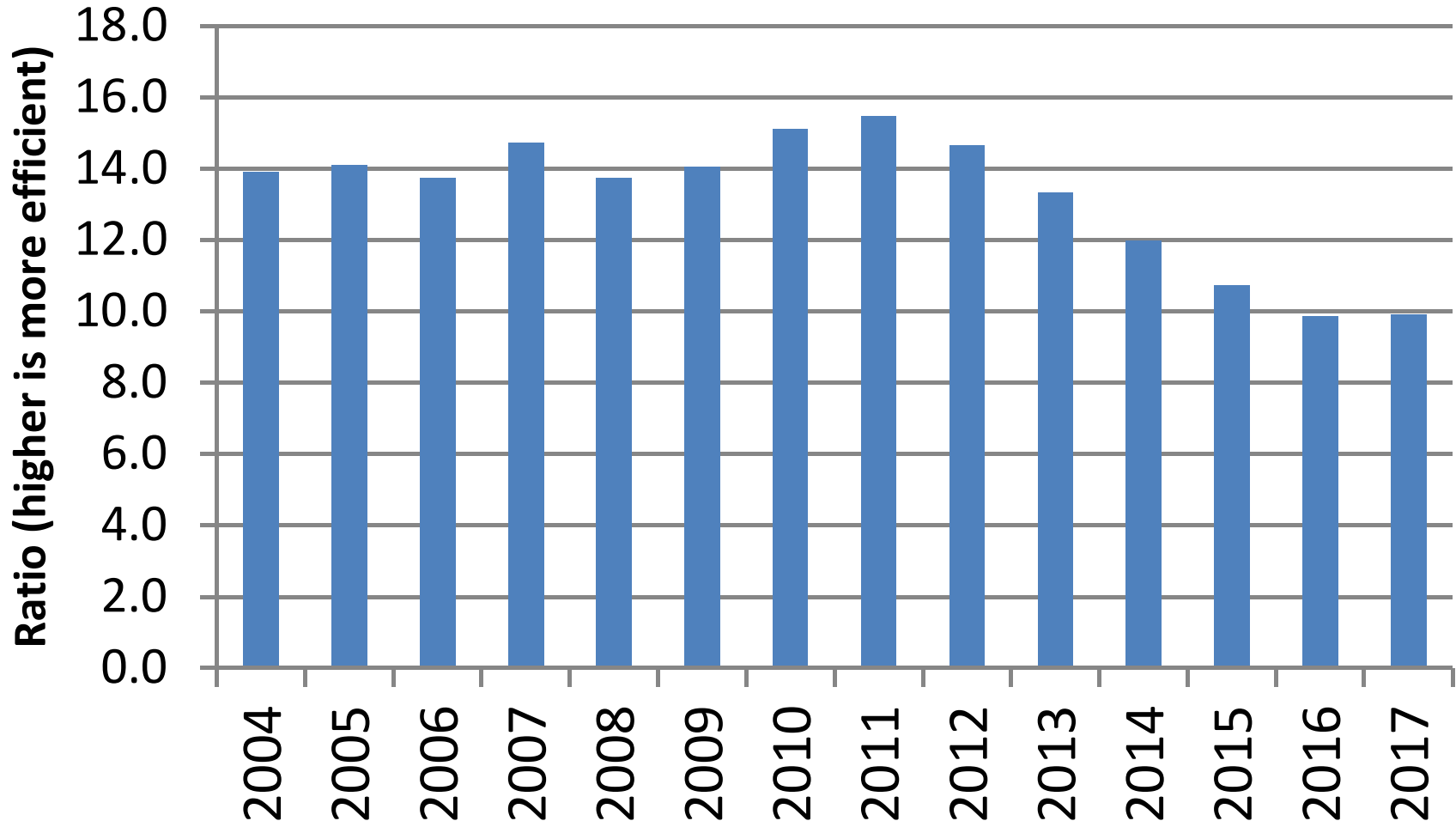
## Financial Ratios vs. Benchmarks (>1.0 is above the low benchmark)



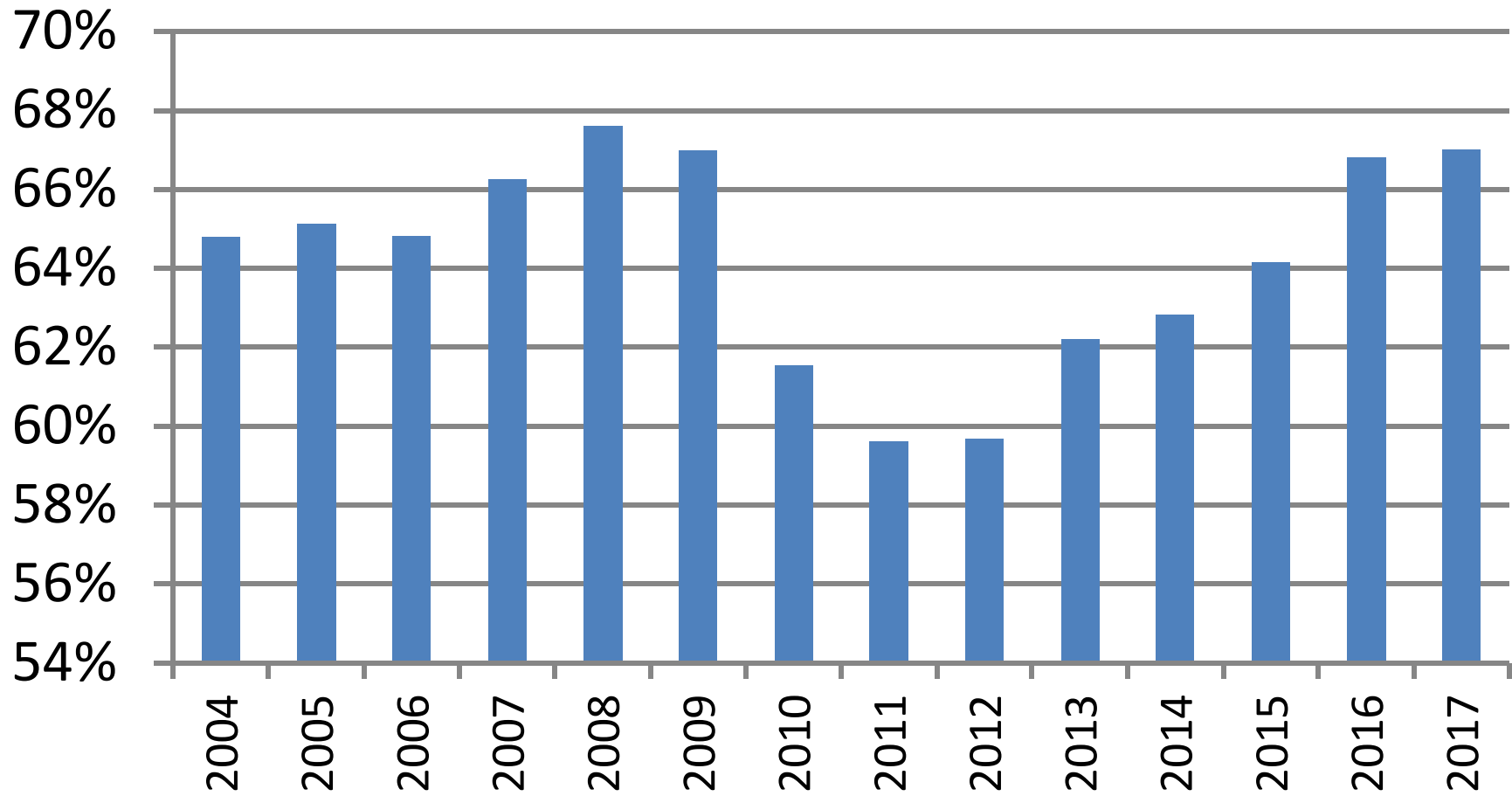
# Revenues by Type (\$mil) and % of Total for Tuition and State Aid



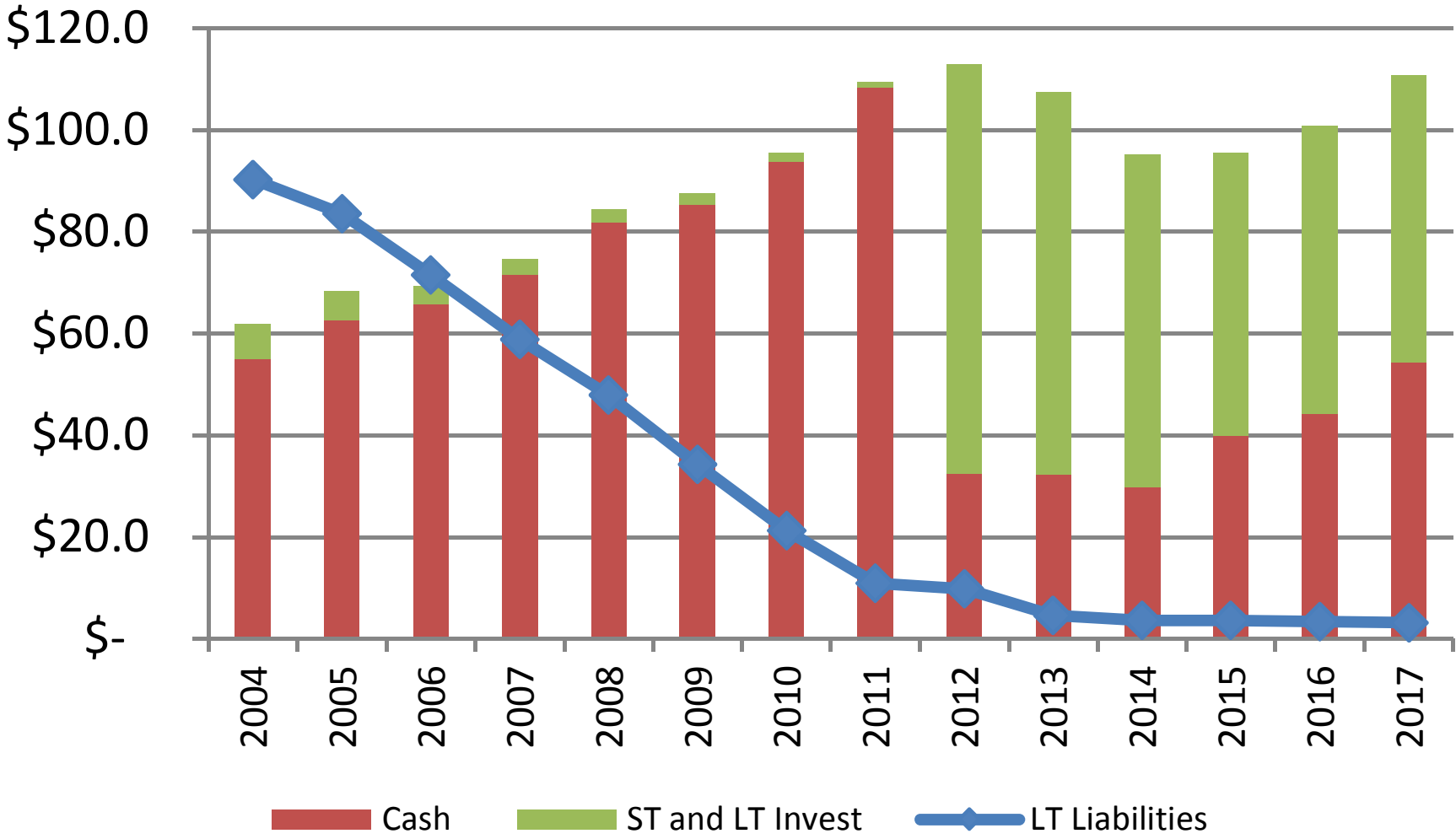
# FTE Students per Fulltime Employee



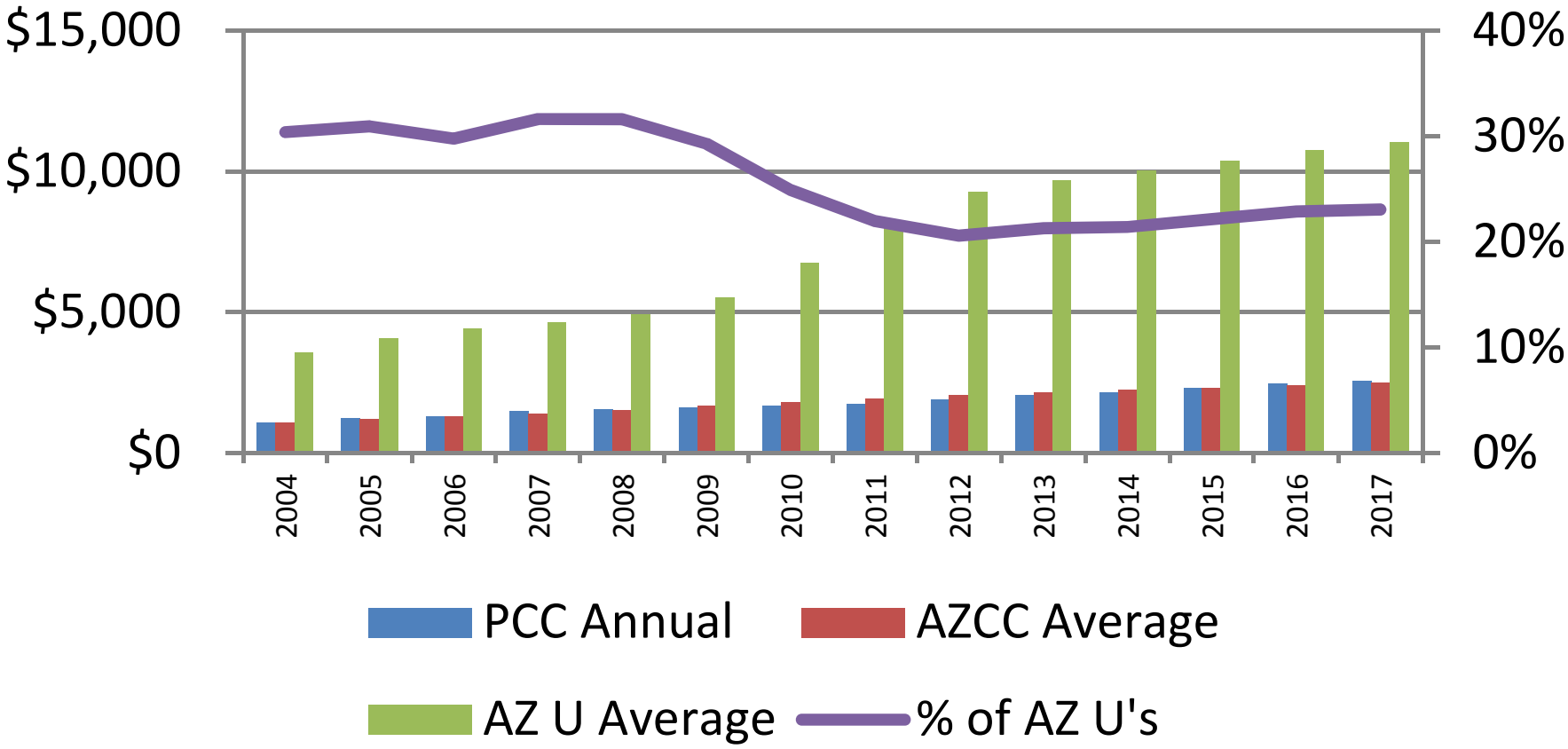
# Personnel Costs as % of Total Operations



# Cash and Investments vs. Long Term Liabilities (\$mil)



# Cost of Attendance: PCC vs. Other AZ CCs and the Universities



# Total Costs per FTSE

