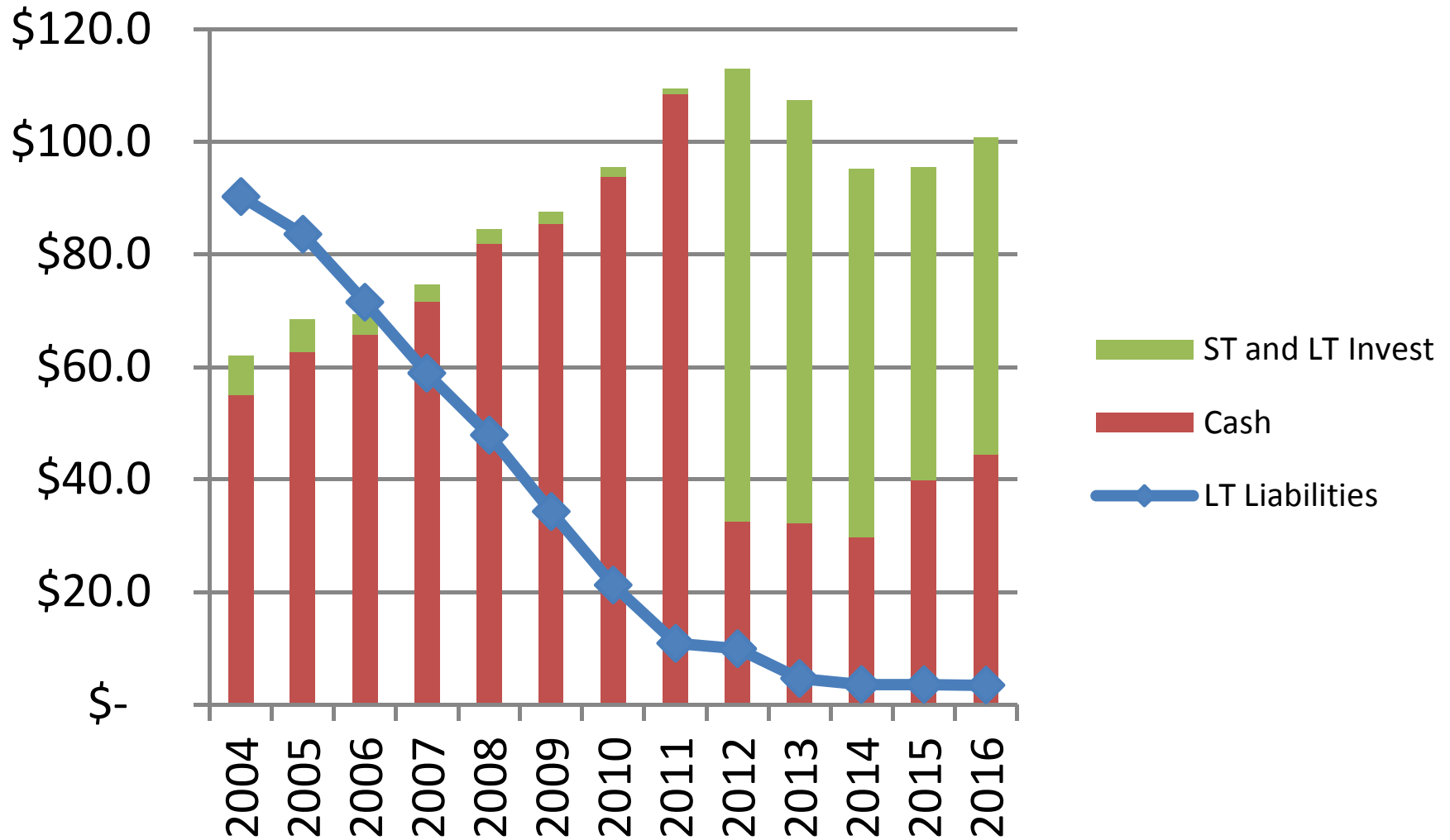
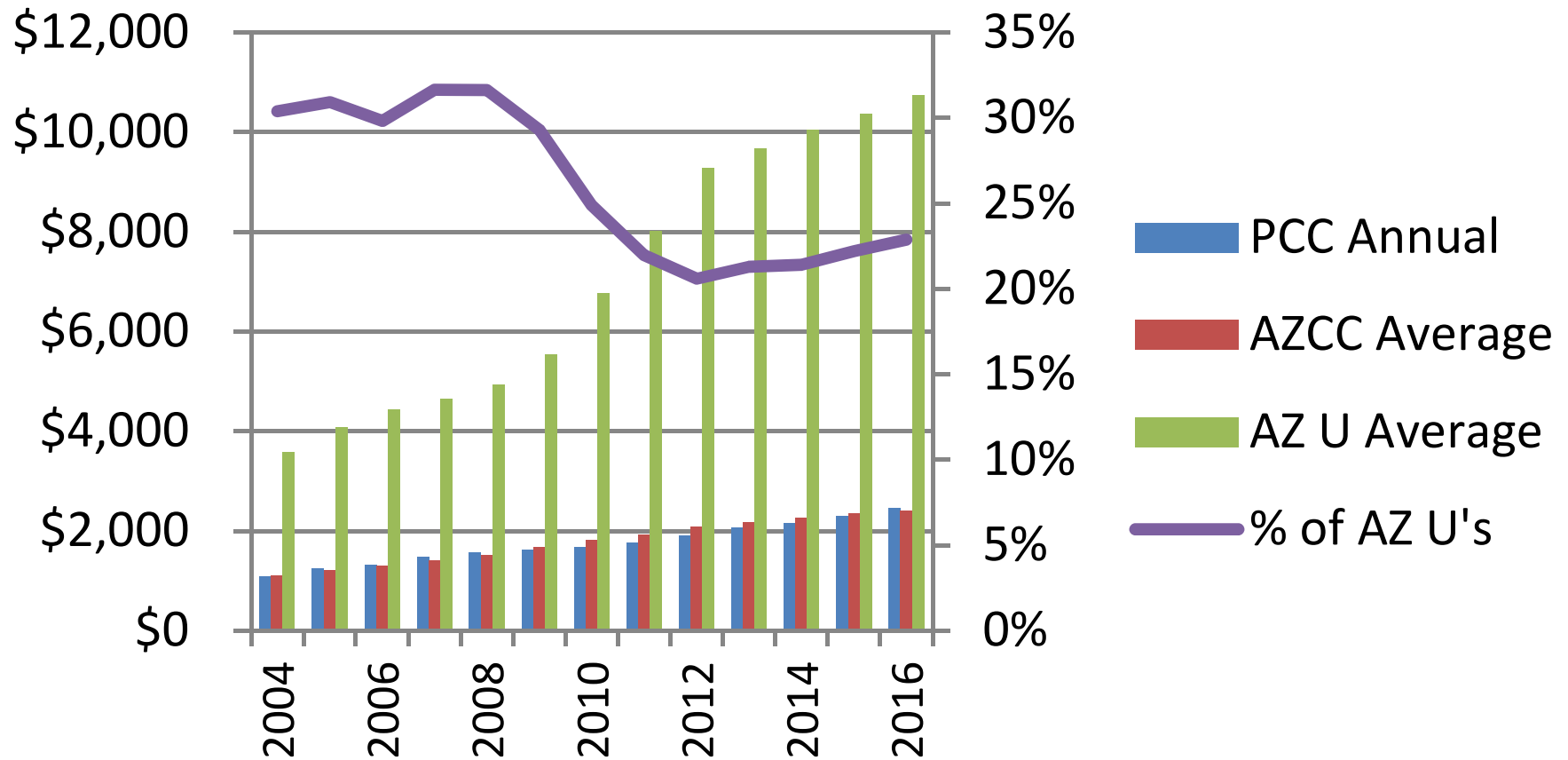


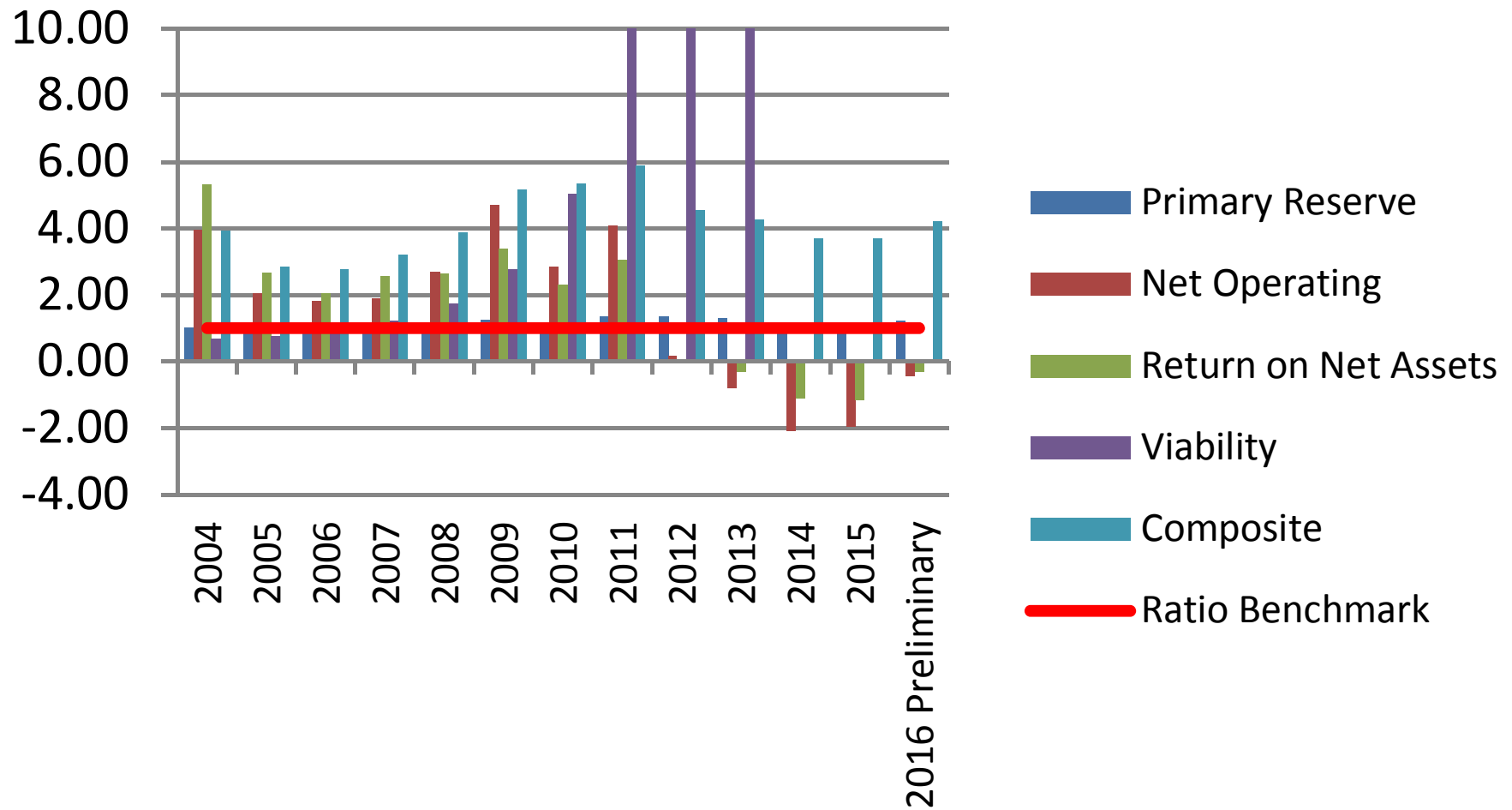
Cash and Investments vs. Long Term Liabilities (\$mil)



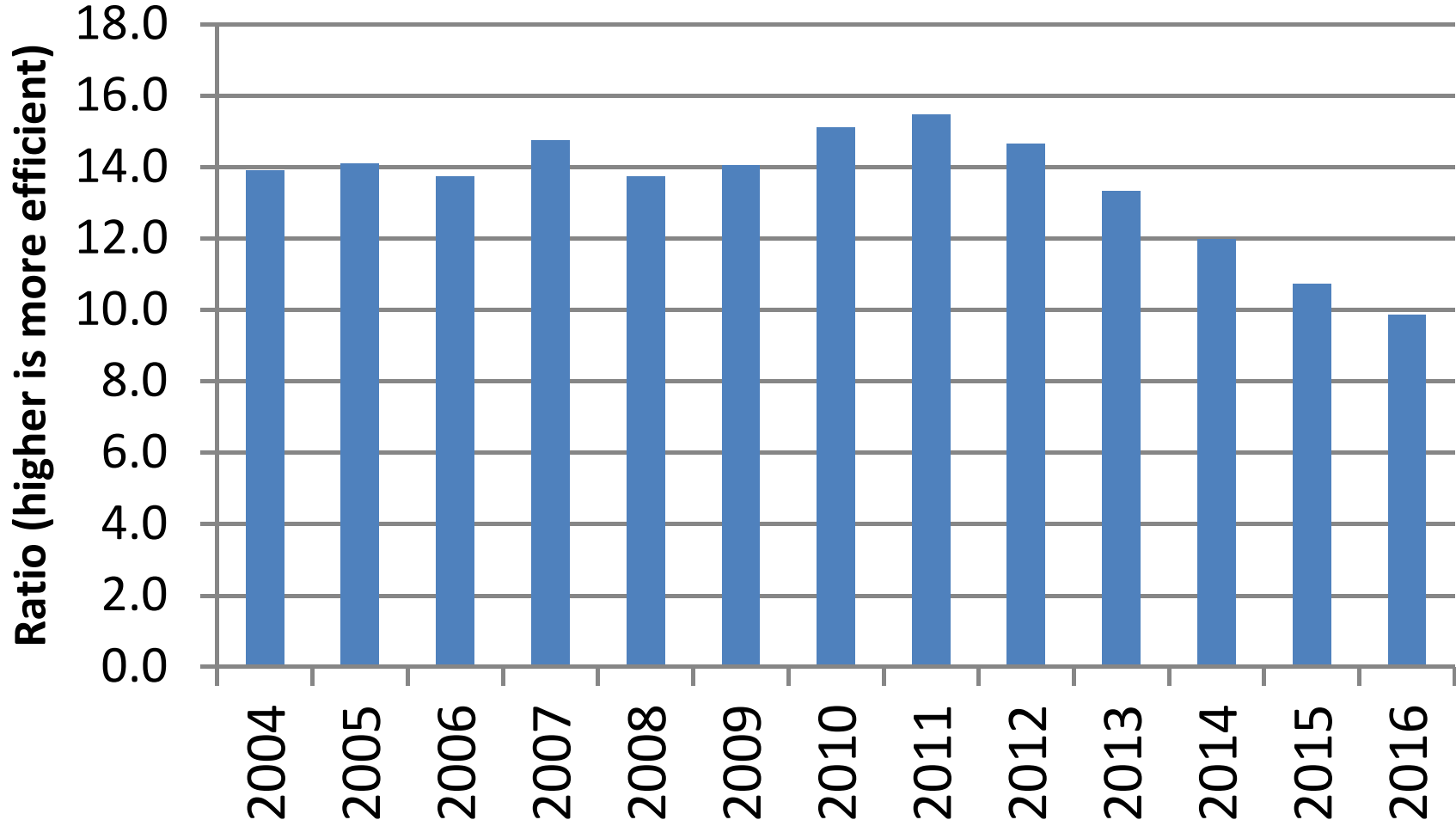
Cost of Attendance: PCC vs. Other AZ CC's and the Universities



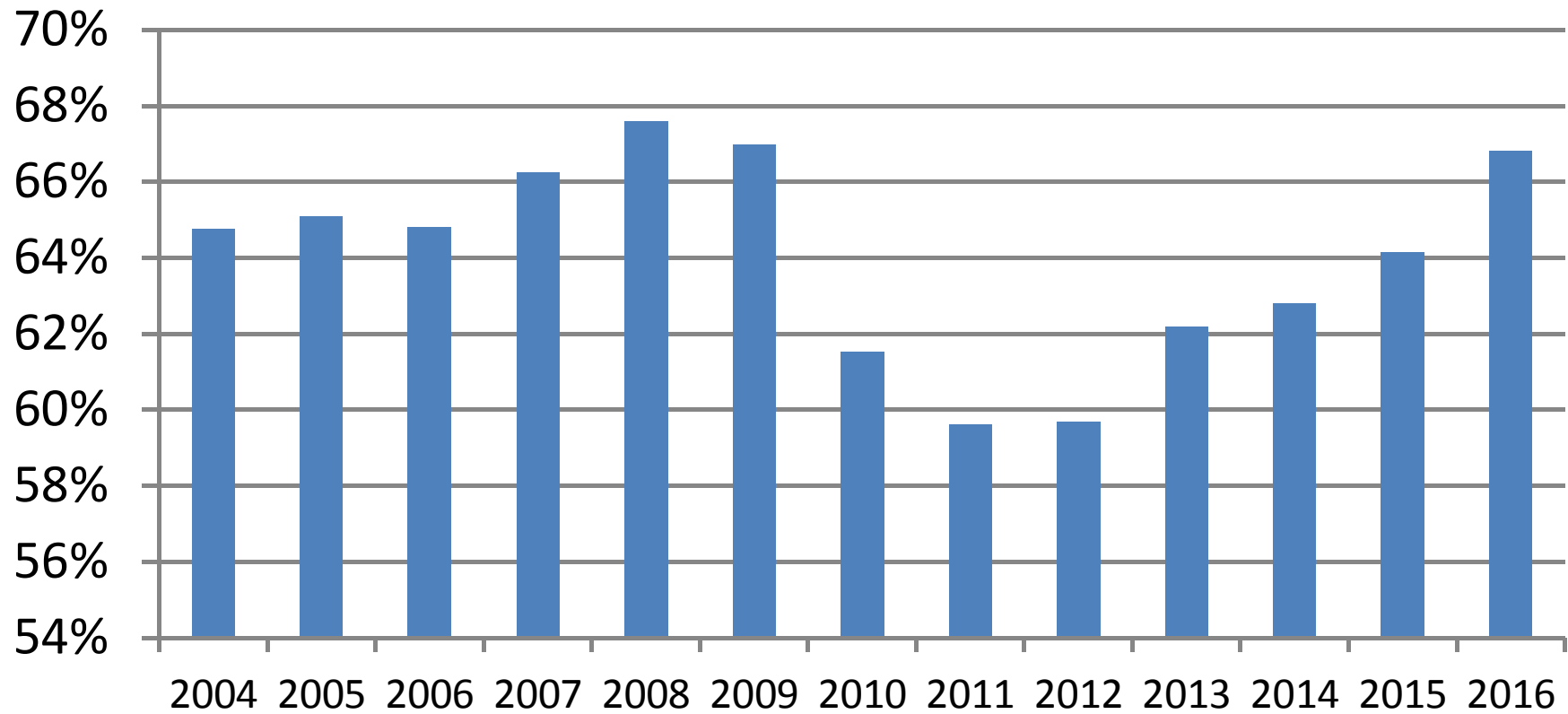
Financial Ratios vs. Benchmarks (>1.0 is above the low benchmark)



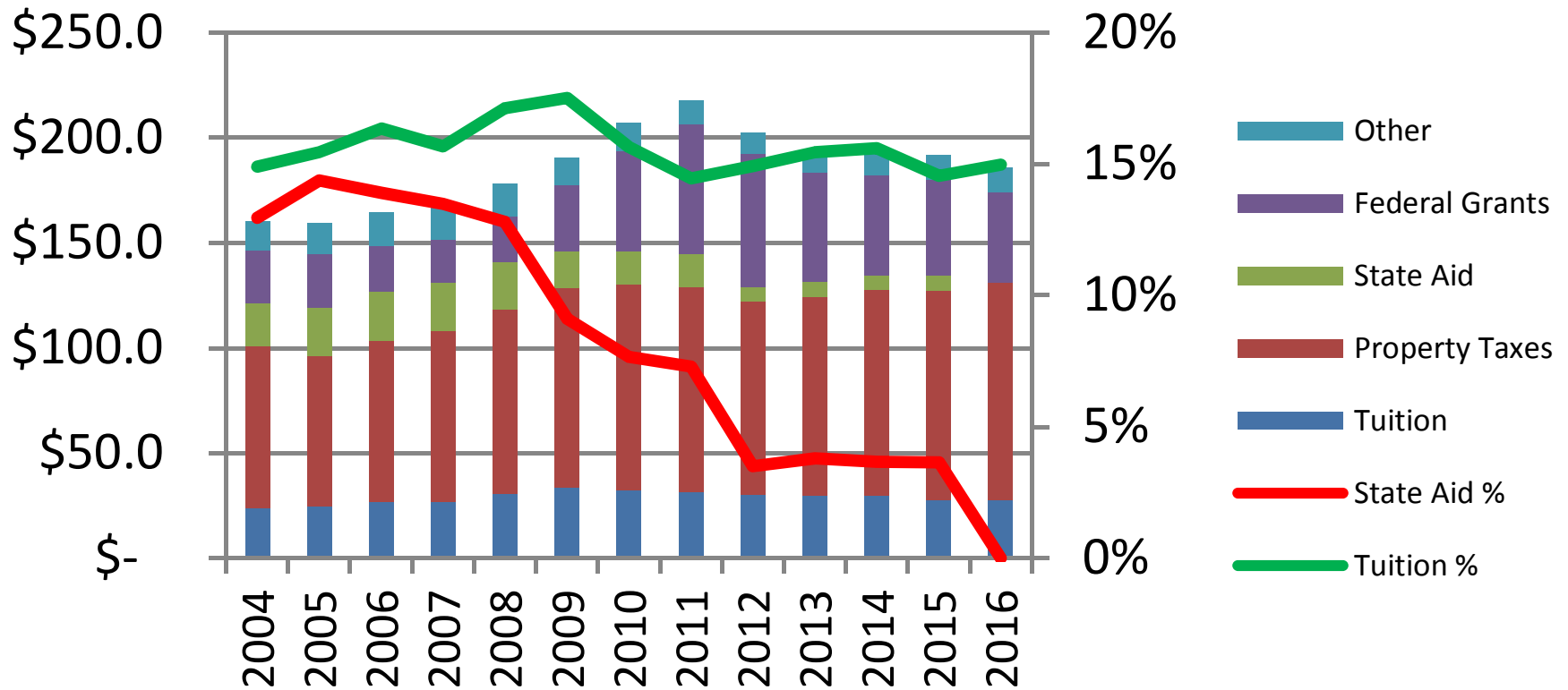
FTE Students per Fulltime Employee



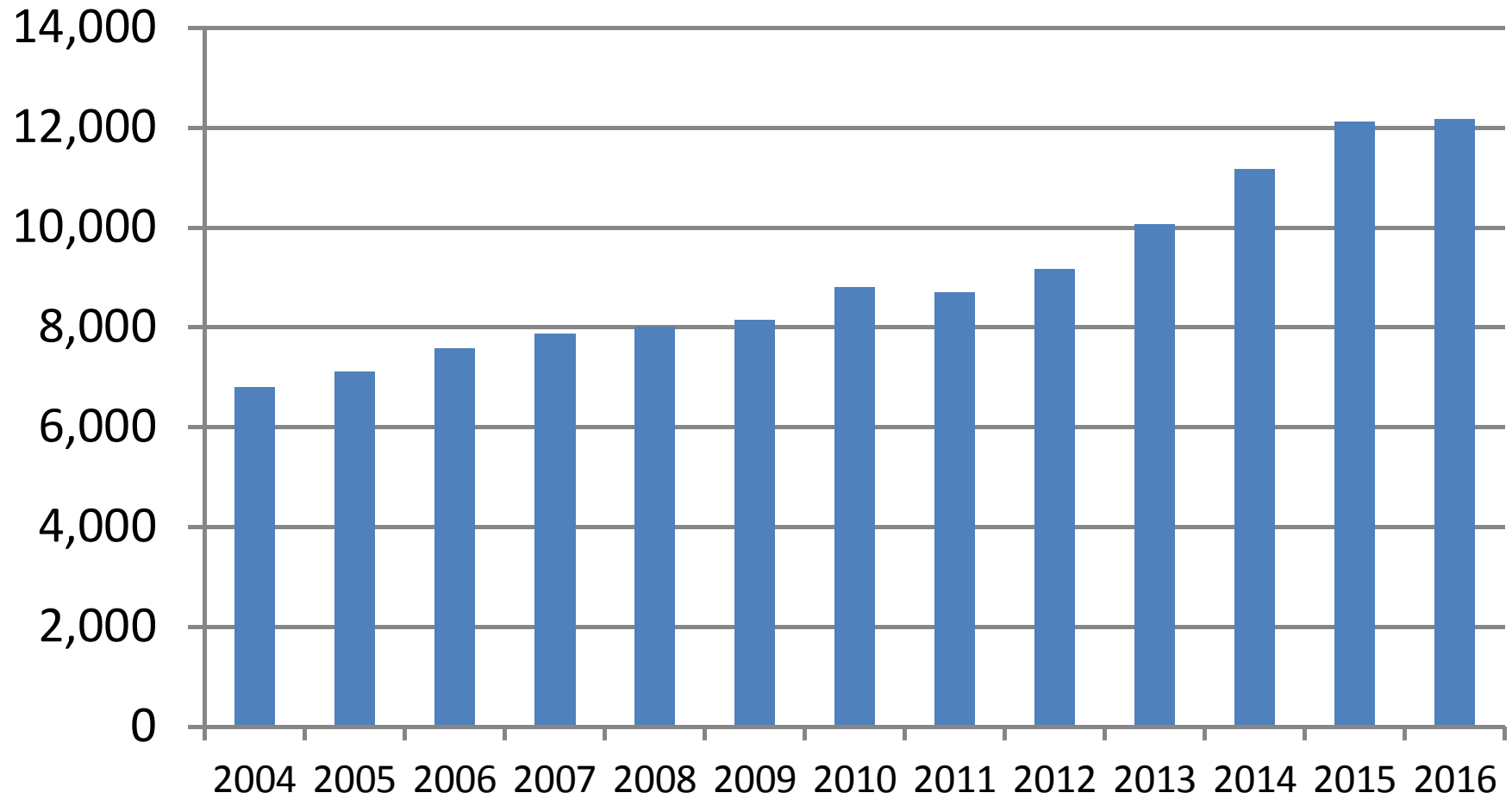
Personnel Costs as % of Total Operations



Revenues by Type (\$mil) and % of Total for Tuition and State Aid






Total Ops \$ per FTSE



Red = Significant Concern
Orange = Moderate Concern
Green = Minimal to No Concern

Key

 = Increase in Trend
 = Maintenance of Trend
 = Decrease in Trend