

Fiscal Year 2016-2017 Tuition Discussion

Board of Governors' Meeting
March 9, 2016

David Bea

Executive Vice Chancellor for Finance and Administration

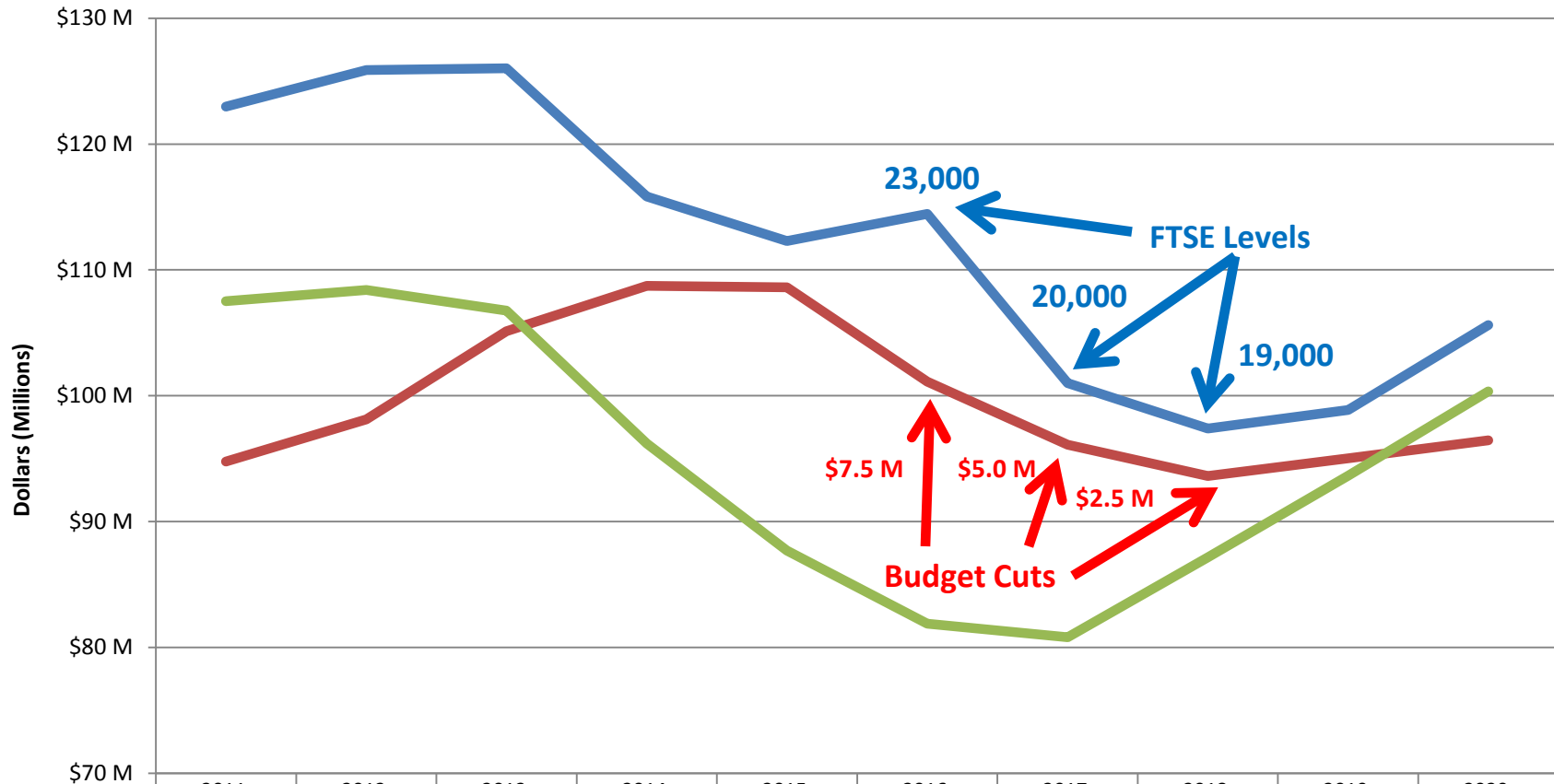


Major Factors Impacting Budget

- No State Appropriations
- Continued Enrollment Declines
- Expenditure Limitation Risk
- Ongoing College Reorganization



Expenditure Limitation Plan: Update



	2011	2012	2013	2014	2015	2016	2017	2018	2019	2020
Estimated EL	\$123.0 M	\$125.9 M	\$126.0 M	\$115.8 M	\$112.3 M	\$114.4 M	\$101.0 M	\$97.4 M	\$98.9 M	\$105.6 M
Actual \$	\$94.8 M	\$98.1 M	\$105.1 M	\$108.7 M	\$108.6 M	\$101.1 M	\$96.1 M	\$93.6 M	\$95.0 M	\$96.4 M
Actual FTSE EL	\$107.5 M	\$108.4 M	\$106.8 M	\$96.2 M	\$87.7 M	\$81.9 M	\$80.8 M	\$87.1 M	\$93.7 M	\$100.3 M

Dollars (Millions) by Fiscal Year



FY 2017 Budget Priorities

- Employee Benefit Costs: +\$ 1.5-2.0 million
- Contractual Obligations: +\$ 0.5 million
- Athletics: +\$ 0.5 million
- Depreciation / Capital Project Funding
- Strategic Resource Reallocation
 - Enrollment Initiatives
 - Operational/Personnel Reductions

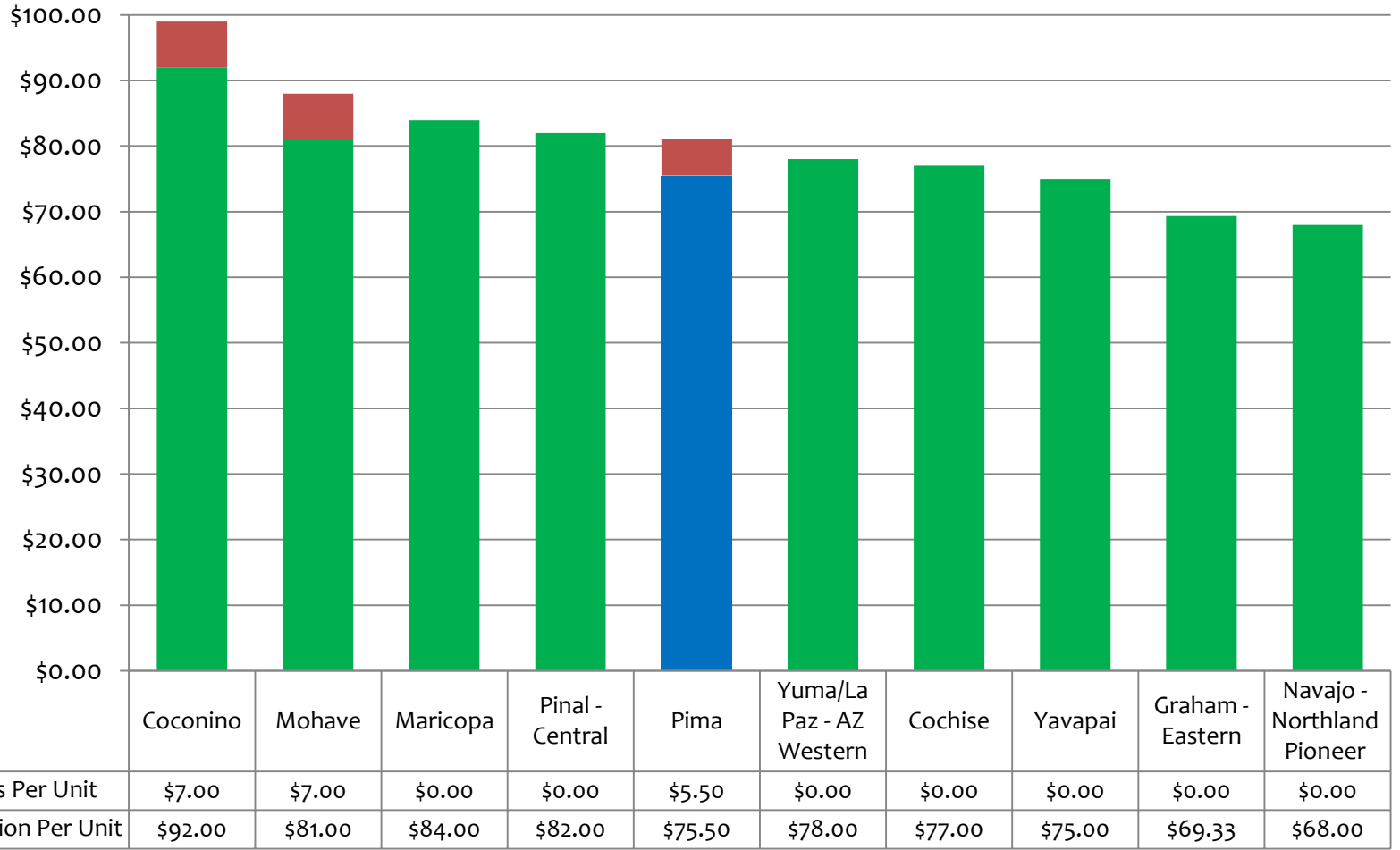


FY 2016 Tuition & Service Fees

FY 2015 Tuition Rates for Credit Classes	Cost Per Unit
In-State Resident	\$ 75.50
Non-resident	\$ 352.00
Non-resident Online	\$ 352.00
Non-resident Summer	\$ 229.00
Differential Tuition A (30%) (In-State Resident)	\$ 22.50
Differential Tuition B (40%) (In-State Resident)	\$ 30.00
Student Services Fee	\$ 3.00
Technology Fee	\$ 2.50
Semester Processing Fee	\$ 15.00



FY 2016 Arizona Community Colleges Tuition + Fees per unit



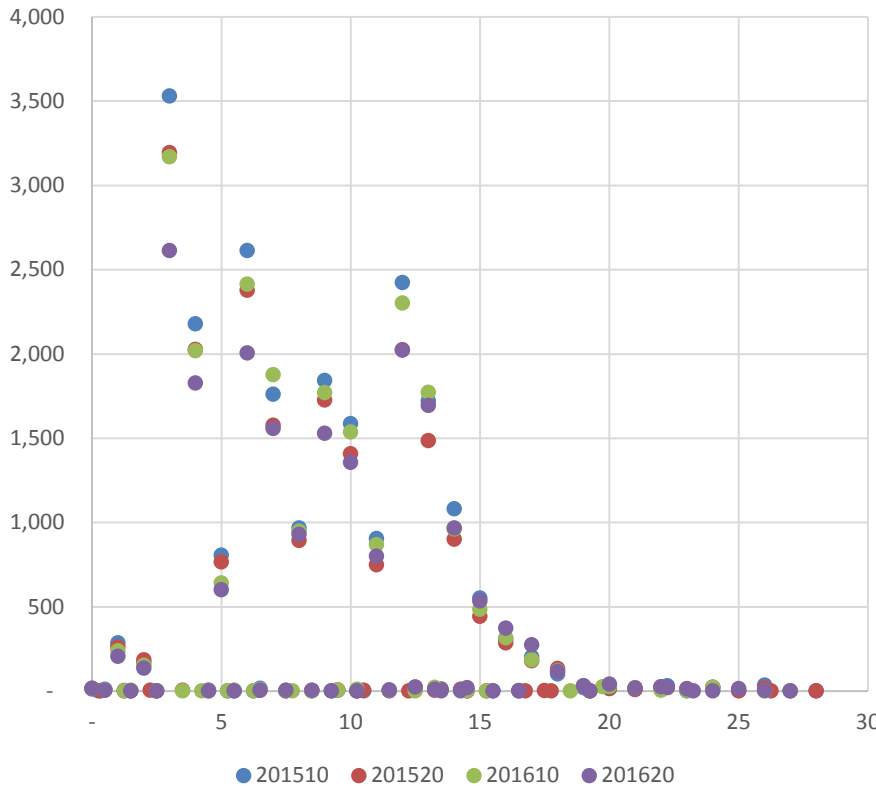
Tuition Options under Consideration

- Traditional In-State Tuition increase
 - \$1 per unit = \$450,000
- Tuition cap
- Lifelong learning program discount for 55+
- Out of State Tuition - market adjustment
- International Tuition - market adjustment

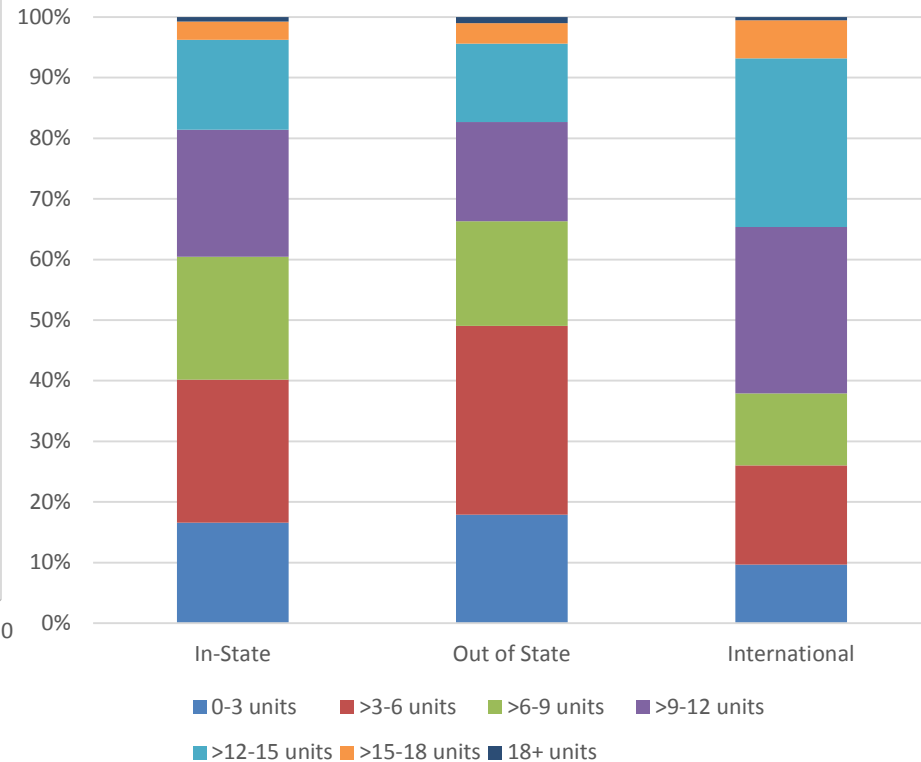


Units Taken in Term by Students

Number of In-State Students by Units per Term

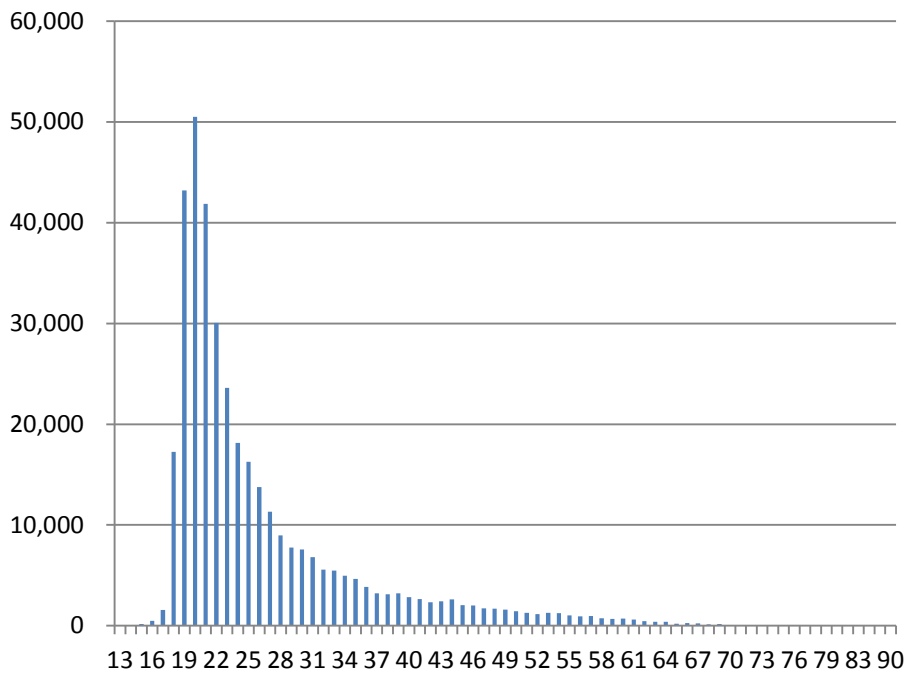


Proportion of Students Taking Various Units By Student Type, Combined Fall/Spring 2015-2016 Terms

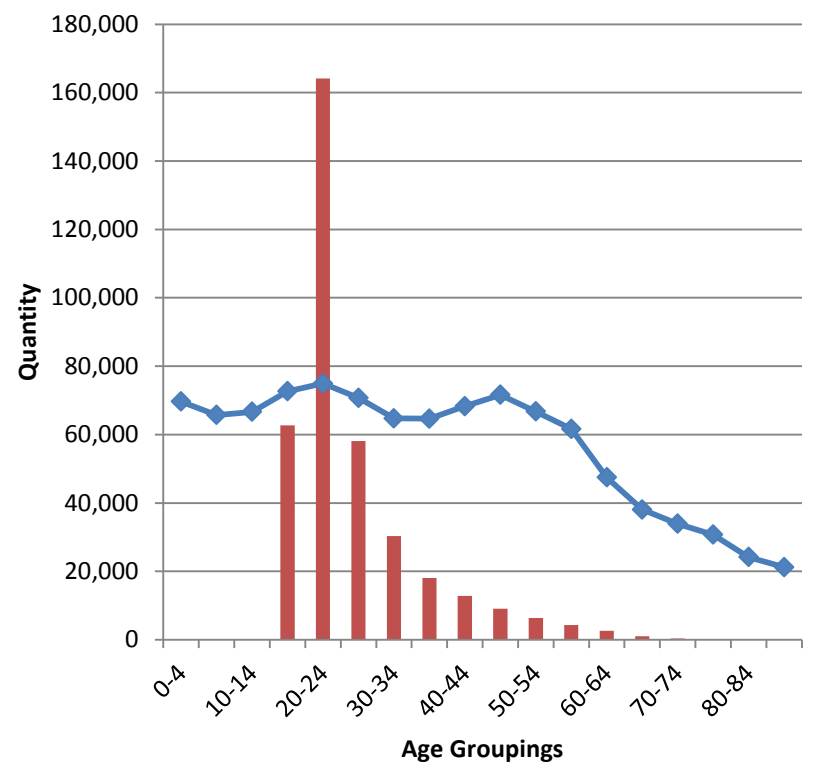


Population vs. Student Age Data

Two Term Average of Credits Taken by Student Age (based on FY15, FY16)



Two Term Average of Credits Taken by Student Age Group (FY15, FY16) vs. 2008 Pima County Population

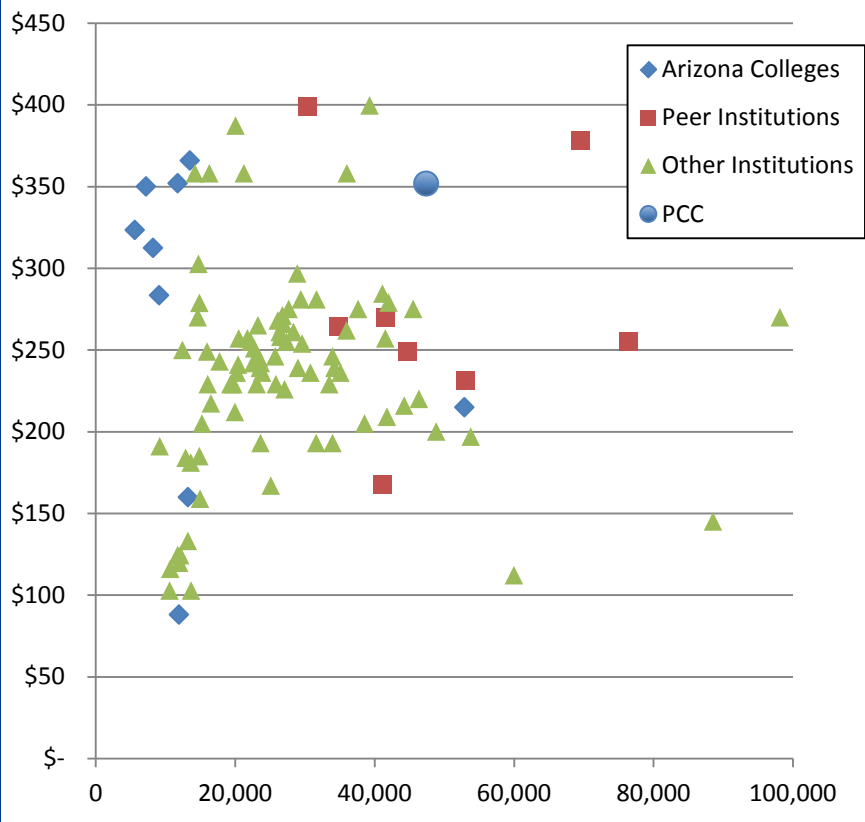


■ Average # Credits taken by Age Grouping for 2 Terms
◆ 2008 Pima County Population by Age Grouping

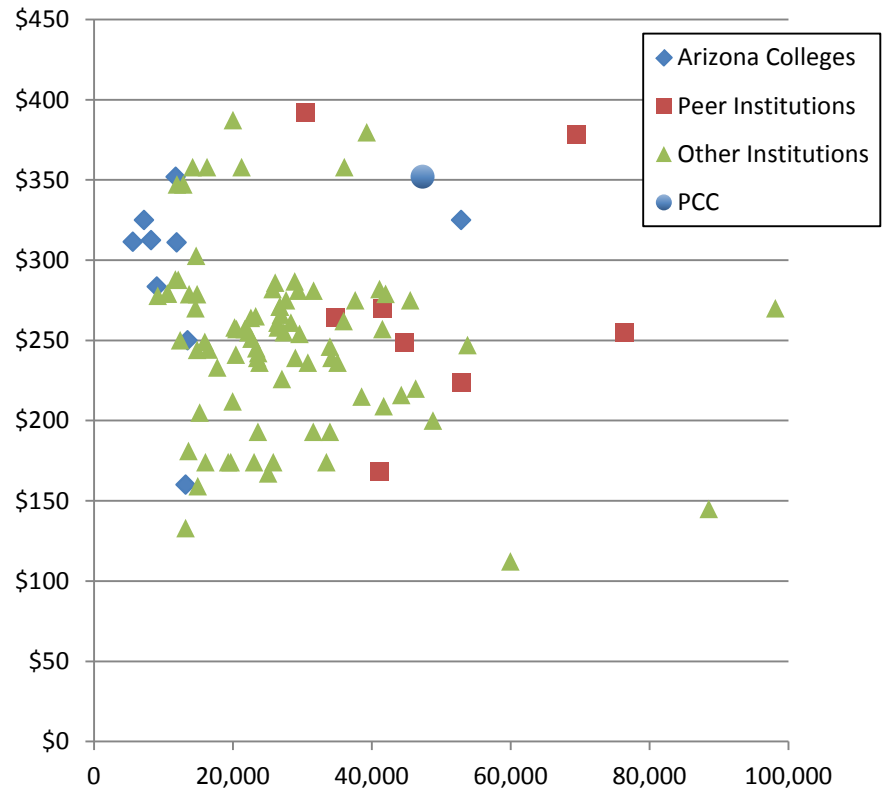


Out of State and International Tuition Comparisons – 2 Year Colleges

Out of State Online Tuition Charges



International Tuition



FY 2017 Tuition Base Recommendation

Tuition Type	Change	Change per Unit	Revenue Impact
In-State Resident	Increase	+\$3.00	+ \$ 1.3 million
International Tuition	Decrease	- \$52.00	- \$ 0.2 million
Out-of-State Non-Resident – Online	Decrease	- \$142.00	- \$ 1.0 million
Out-of-State Non-Resident – Classroom	Decrease	- \$52.00	- \$ 0.1 million
New Tuition Discount			
In-State, 55 yrs. old and above	Decrease	50% of In-State Rate	- \$ 0.3 million
Tiered/Capped Tuition at 15 units			- \$ 0.4 million
		Net Revenue	- \$ 0.7 million
Plus Budget Reduction			- \$ 3.7 million
Expenditure Limitation FY 2017			\$ 97.6 million



Questions?

