

Fiscal Year 2016-2017 Budget Planning & Outlook and FY 2016-2017 Tuition Discussion

David Bea

Executive Vice Chancellor for Finance and Administration

Spring 2016

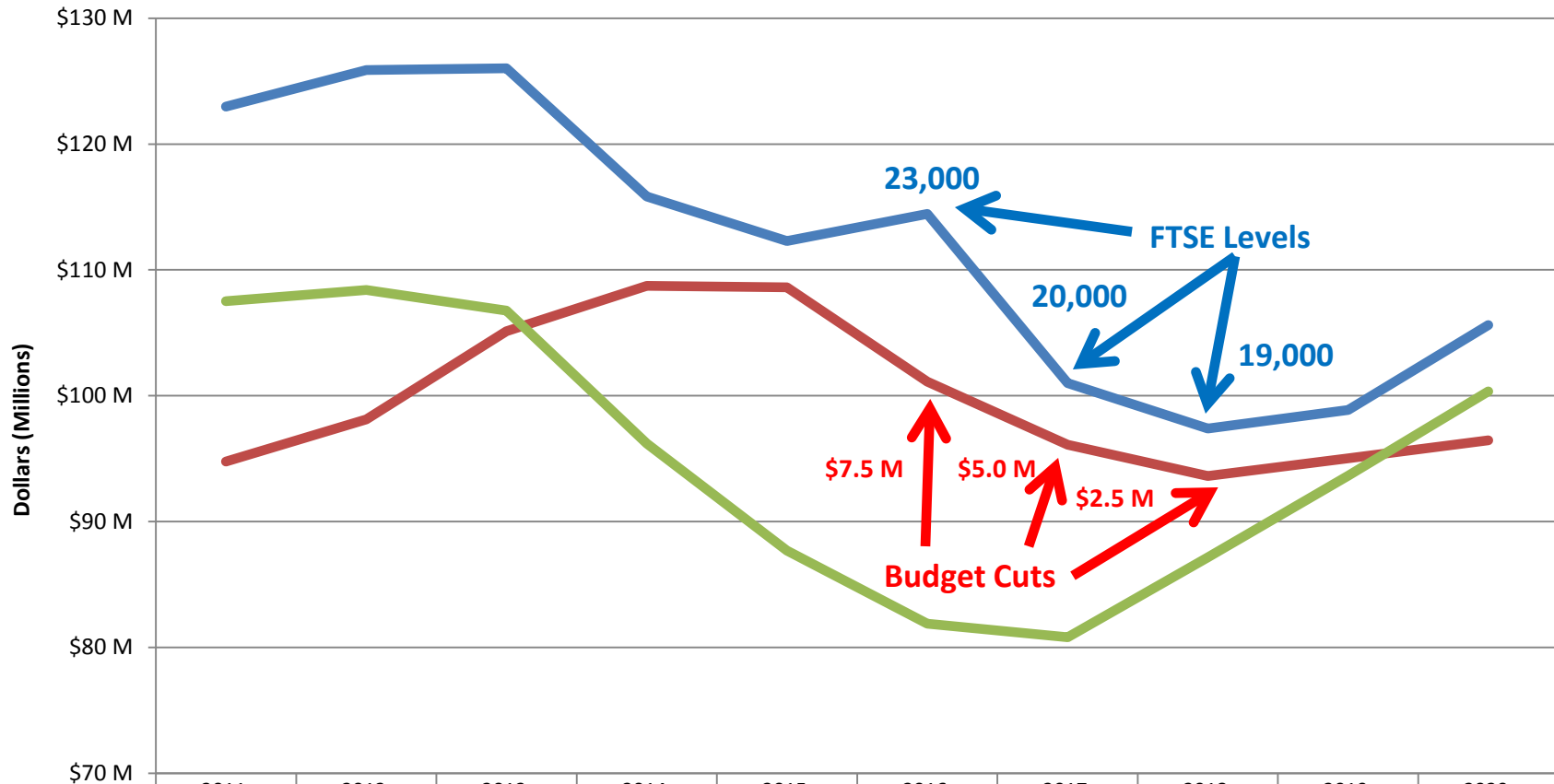


Major Factors Impacting Budget

- No State Appropriations
- Continued Enrollment Declines
- Expenditure Limitation Risk
- Ongoing College Reorganization



Expenditure Limitation Plan: Update



Dollars (Millions) by Fiscal Year



Senate Bill 1322 – Community College Expenditure Limitation (EL)

- Modifies, calculations of community college’s expenditure limits, the calculation of full-time equivalent student enrollment, career and technical education (CTE) course weights and excludable revenues.
- CTE course weighting = 1.3
- Changes to FTSE calculation to permit one of the following FTSE estimates for EL purposes:
 - the most recent audited FTSE count;
 - the average of the five most recent audited FTSE counts; or
 - a FTSE count up to 5 percent more than the most recent audited FTSE count if the current Fall semester 45th day actual FTSE count exceeded the previous Fall semester 45th day actual FTSE count.
 - Allows, as session law, a community college district to submit the average of the ten most recent audited FTSE for the next three years.
- Adds additional exclusions for “local revenues”



FY 2017 Budget Supports PCC's Mission, Strategic Planning, and Assessment



Preliminary Budget Estimates: FY 2017 – General Fund Revenues (\$ millions)

	<u>FY 16</u>	<u>FY 17</u>	Preliminary estimates
Property Tax Levy	\$ 104.3	\$ 2.0	1.89% - FY 2016 Growth
		\$ 2.1	2.00% - Requires Truth in Taxation process in May
State Appropriations	0.0	\$ 0.0	
Tuition and Fees	46.7		\$1.00 credit hour increase = \$450,000 additional revenue, presented at March Board Meeting
Other Revenue	0.7		
College Equity	0.5		
	<hr/>		
Total Resources	\$ 152.2		



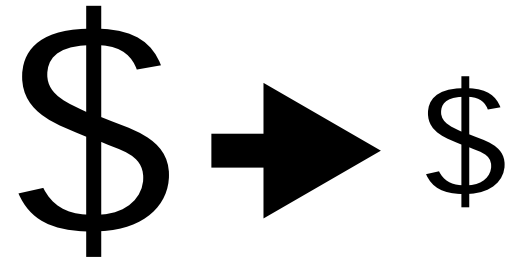
Preliminary Budget Estimates: FY 2017 – General Fund Expenses (\$ millions)

	<u>FY 16</u>	<u>FY 17</u>	Preliminary Estimates
Personnel	\$ 90.1		
Fringe	27.0	\$ 2.0	Benefits (Health, Retirement, Other)
Subtotal	\$ 117.1		
Operations	\$ 27.7	\$ 0.5	Contractual Services and Utilities
Capital	0.4		
Transfers (net)	1.3	\$ 0.5	Athletics
Reserves	5.7		
Total	\$ 152.2		

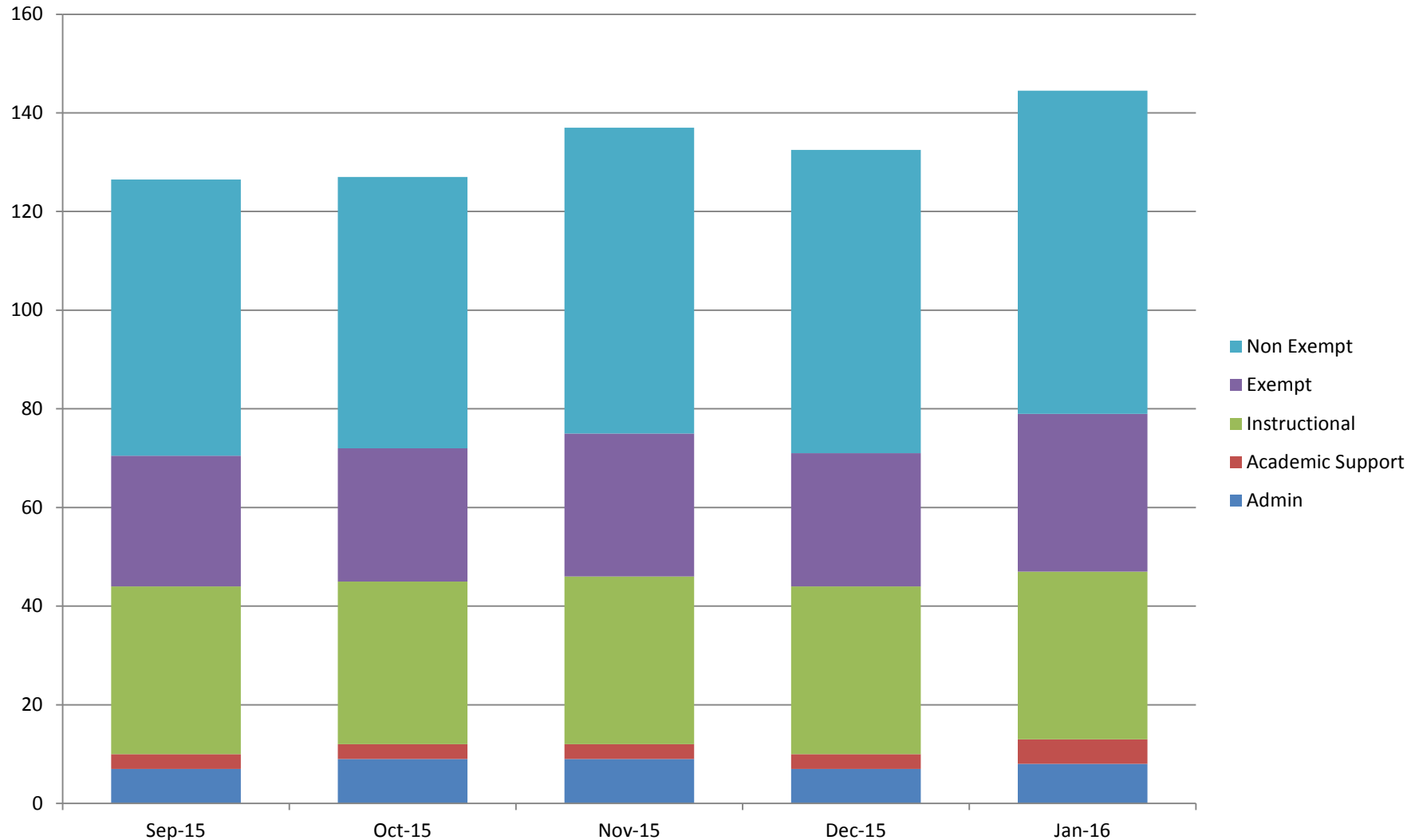


Expenditure Limitation (EL) Cost Reduction Strategies

- Reorganization/Reductions
 - Campus/Department Consolidation
 - Hiring / Recruitment Reviews
 - Eliminate Positions
- Reduce Capital Budget
 - Lease purchase equipment vs. purchase
- Tuition Increase
- Tax Levy ➔ Fund future capital needs
 - Program innovation
 - Resource reallocation/consolidation



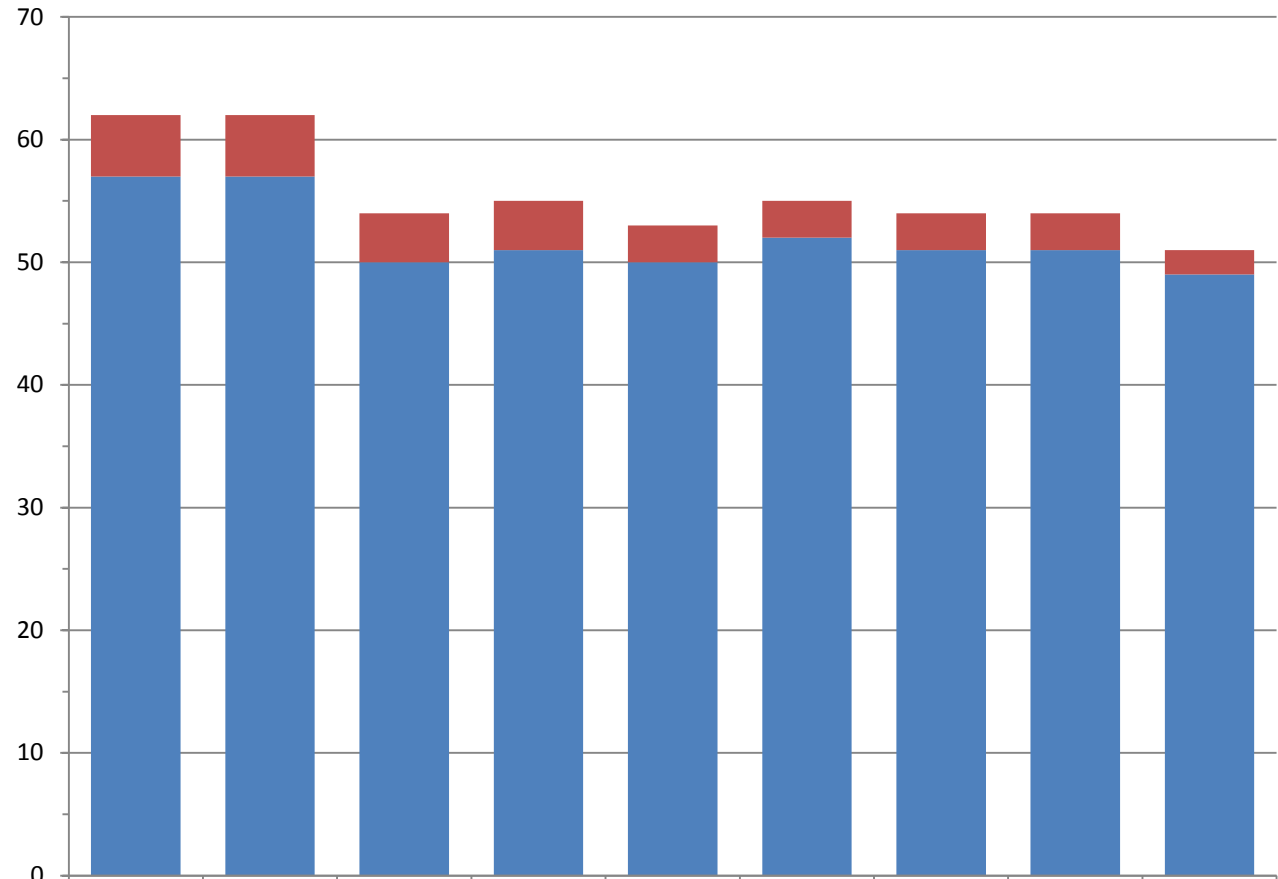
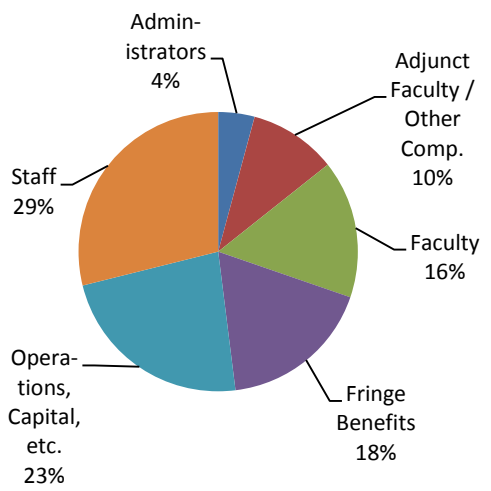
Change in Number of Vacant Positions by Month and Personnel Account Code



PCC Administrator Positions

(FY 2008-2016, All Funds)

PCC General Fund Budget Expenses, FY 2016



# Administrator Positions - Other Funds	5	5	4	4	3	3	3	3	2
# Administrator Positions - General Fund	57	57	50	51	50	52	51	51	49

Total 62 62 54 55 53 55 54 54 51



FY 2017 Priorities for Discussion

- Health Benefit Costs
- Contractual Obligations
- Athletics
- Depreciation / Capital Project Funding
- Strategic Resource Reallocation
 - Personnel Reductions
 - Tuition/Enrollment Initiatives

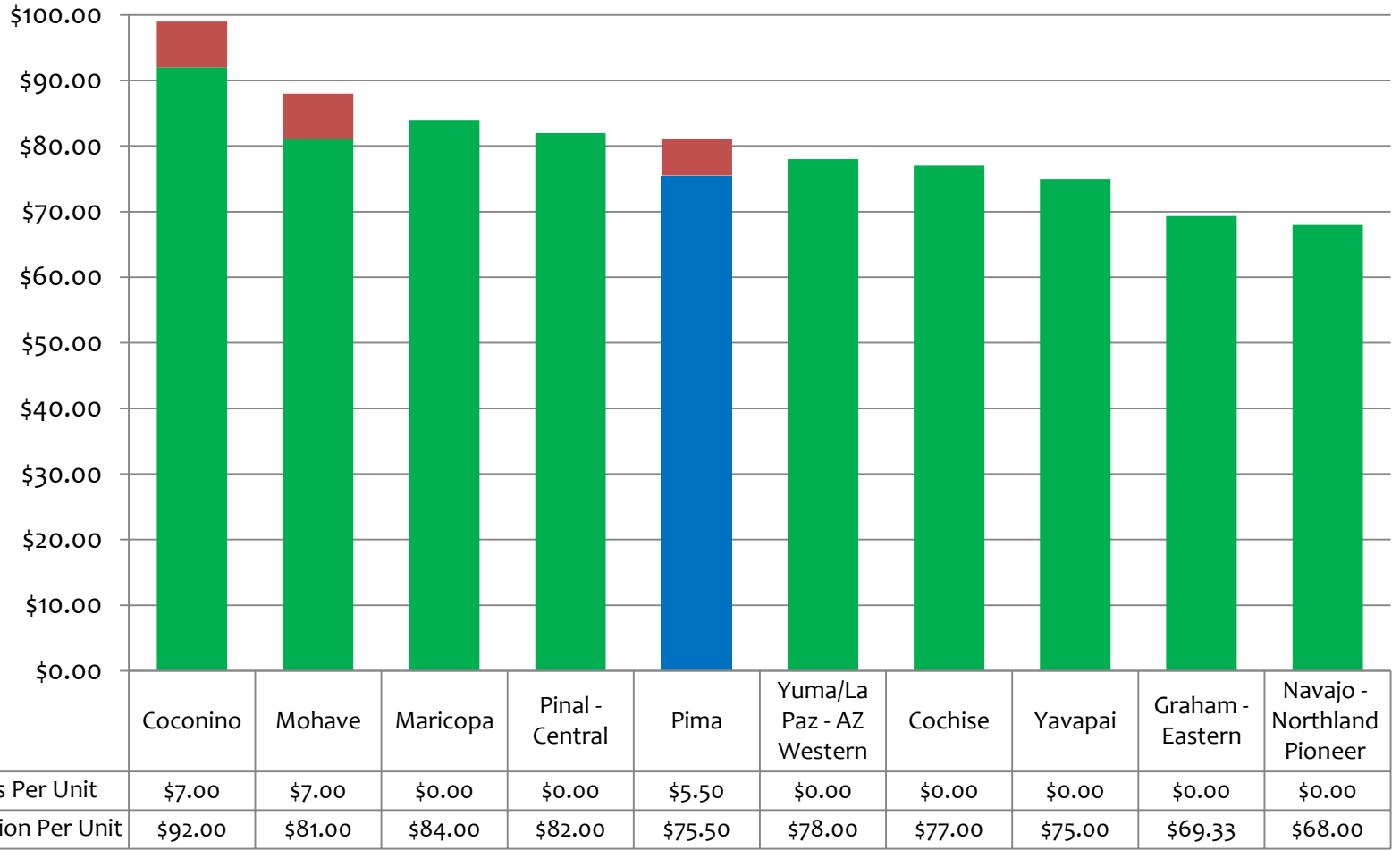


FY 2016 Tuition & Service Fees

FY 2015 Tuition Rates for Credit Classes	Cost Per Unit
In-State Resident	\$ 75.50
Non-resident	\$ 352.00
Non-resident Online	\$ 352.00
Non-resident Summer	\$ 229.00
Differential Tuition A (30%) (In-State Resident)	\$ 22.50
Differential Tuition B (40%) (In-State Resident)	\$ 30.00
Student Services Fee	\$ 3.00
Technology Fee	\$ 2.50
Semester Processing Fee	\$ 15.00



FY 2016 Arizona Community Colleges Tuition + Fees per unit



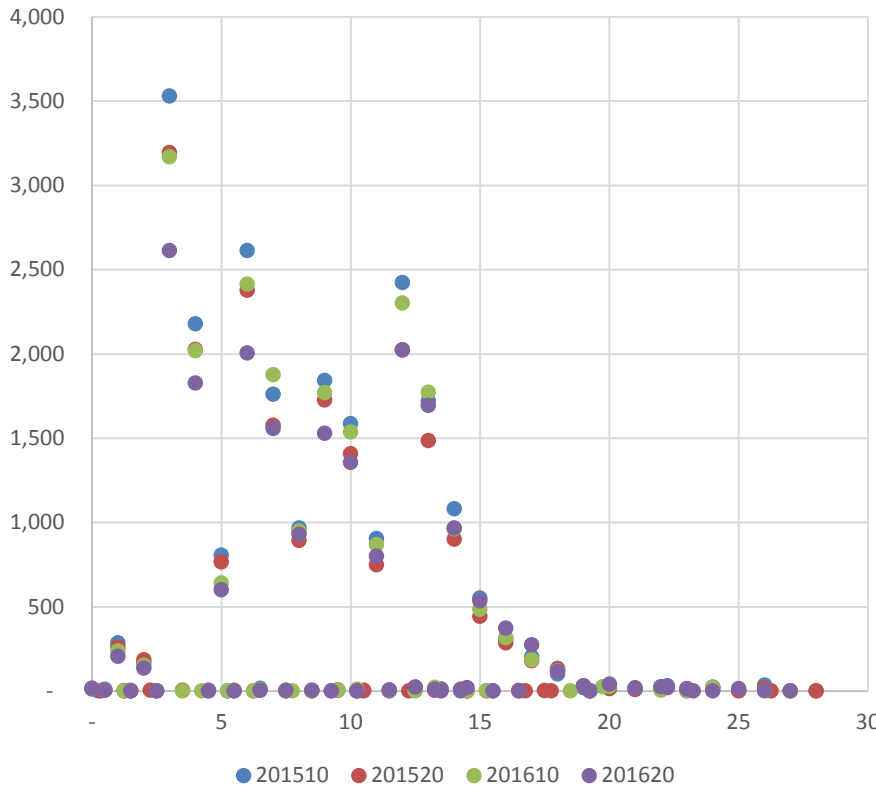
Tuition Options under Consideration

- Traditional In-State Tuition increase
 - \$1 per unit = \$450,000
- Tuition cap
- Lifelong learning program discount for 55+
- Out of State Tuition
- International Tuition
- Other Differential Tuition?

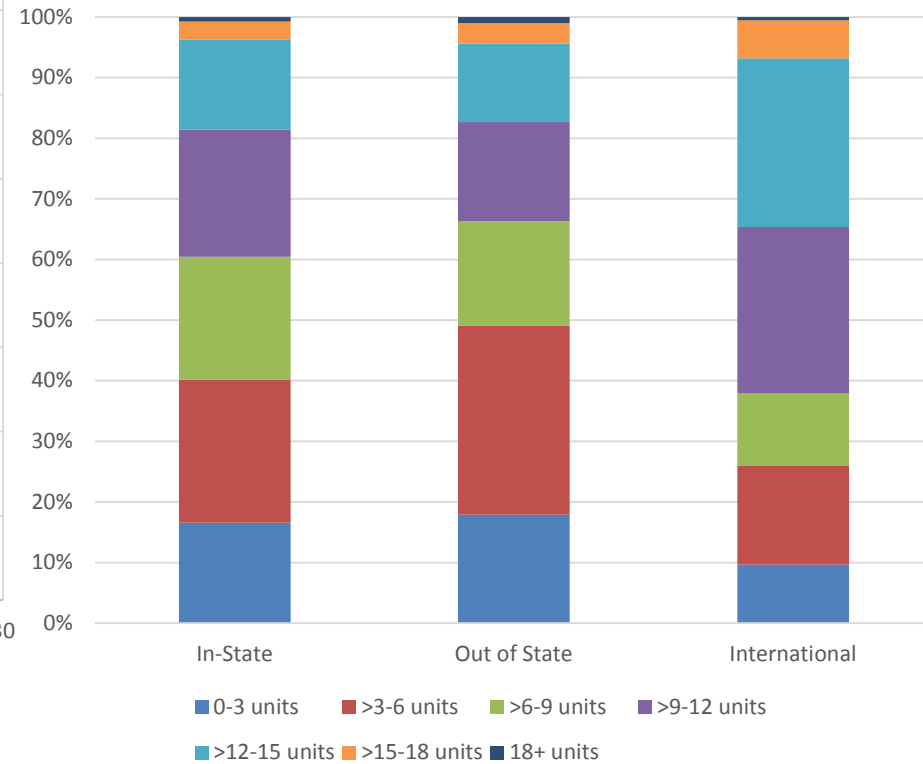


Units Taken in Term by Students

Number of In-State Students by Units per Term

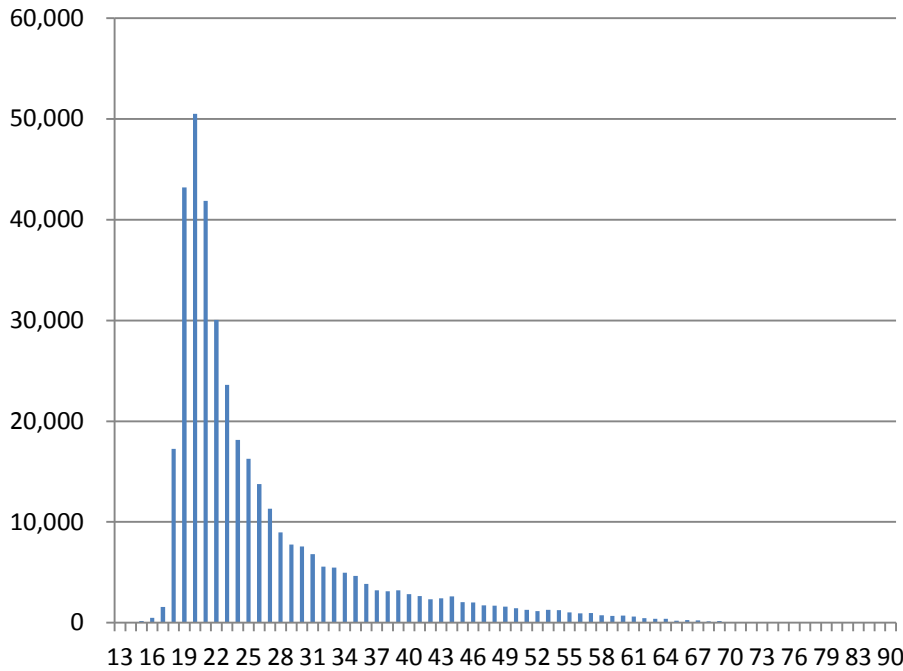


Proportion of Students Taking Various Units By Student Type, Combined Fall/Spring 2015-2016 Terms

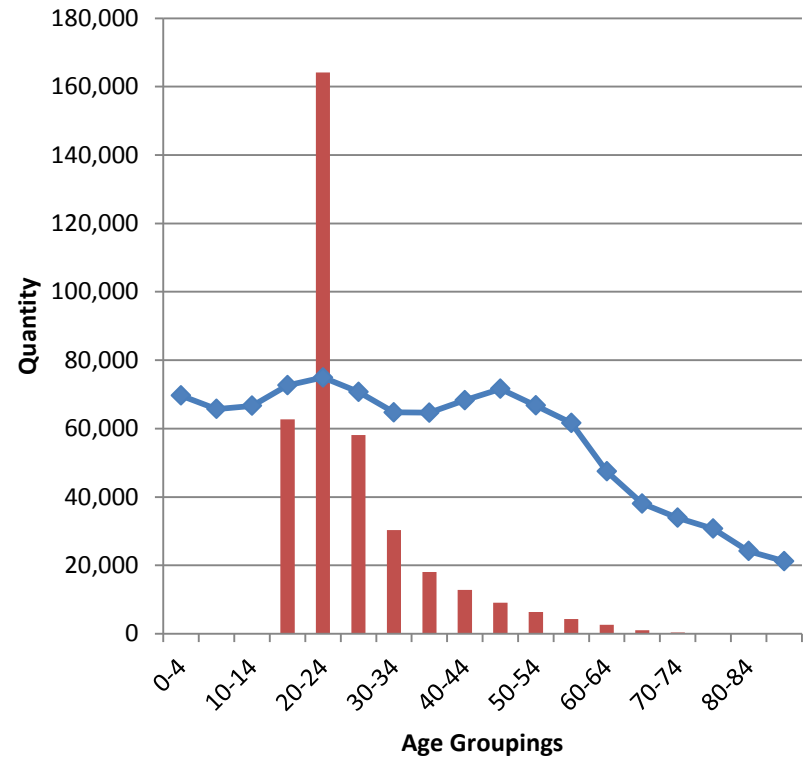


Population vs. Student Age Data

Two Term Average of Credits Taken by Student Age (based on FY15, FY16)



Two Term Average of Credits Taken by Student Age Group (FY15, FY16) vs. 2008 Pima County Population

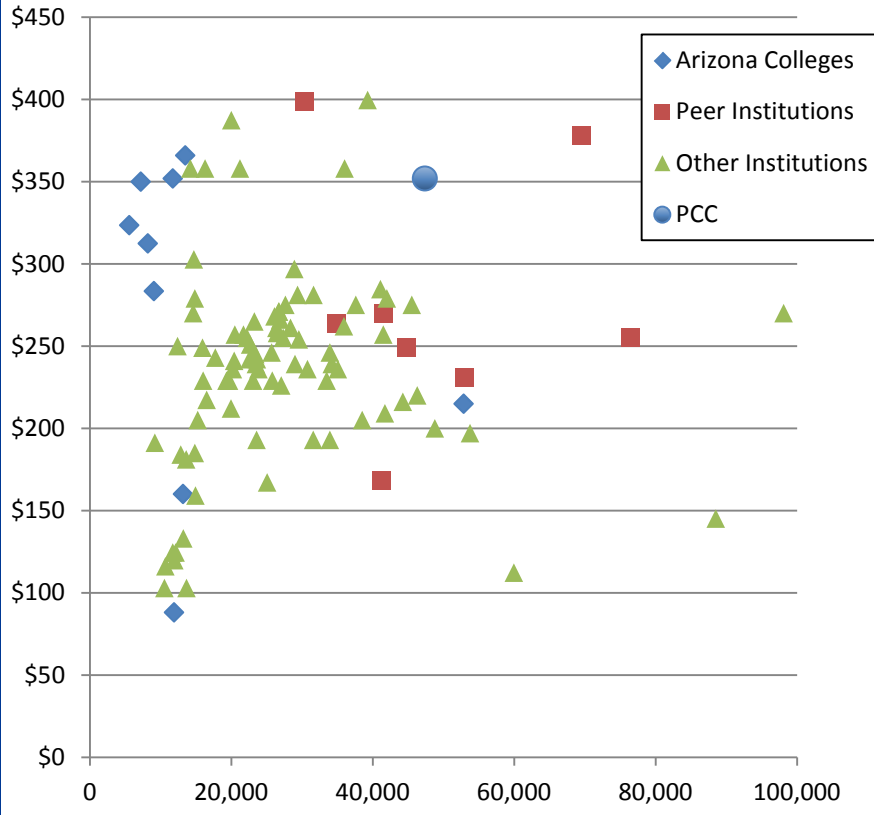


■ Average # Credits taken by Age Grouping for 2 Terms
◆ 2008 Pima County Population by Age Grouping

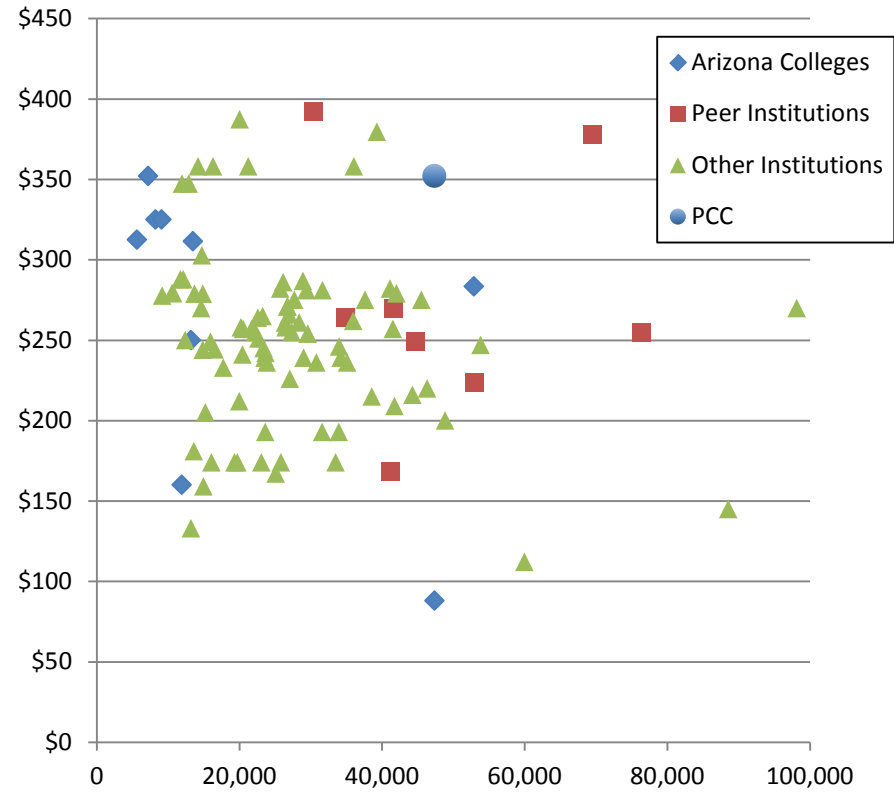


Out of State and International Tuition Comparisons – 2 Year Colleges

Out of State Online Tuition Charges



International Tuition



Tuition Scenarios

Tuition Type	Change	Change per Unit
In-State Resident	Increase	+\$3.00
Out-of-State Non-Resident – Online	Decrease	- \$142.00
Out-of-State Non-Resident – Classroom	Decrease	- \$52.00
International Tuition	Decrease	- \$52.00
New Tuition Discount		
In-State, 55 yrs. old and above	Decrease	50% of In-State
Tiered/Capped Tuition at 15 units		

Budget Reduction - \$3.6 million



Feedback?

