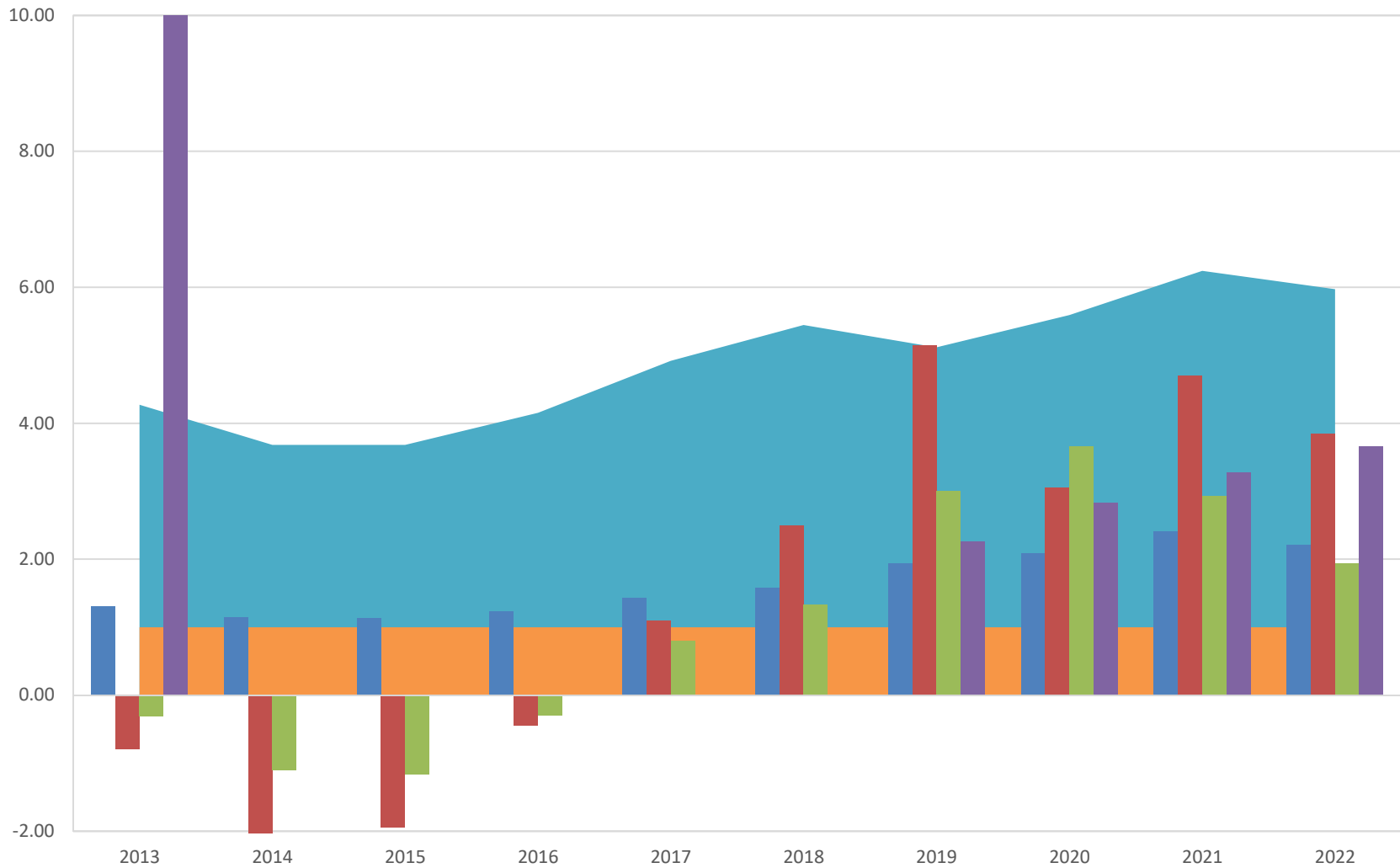
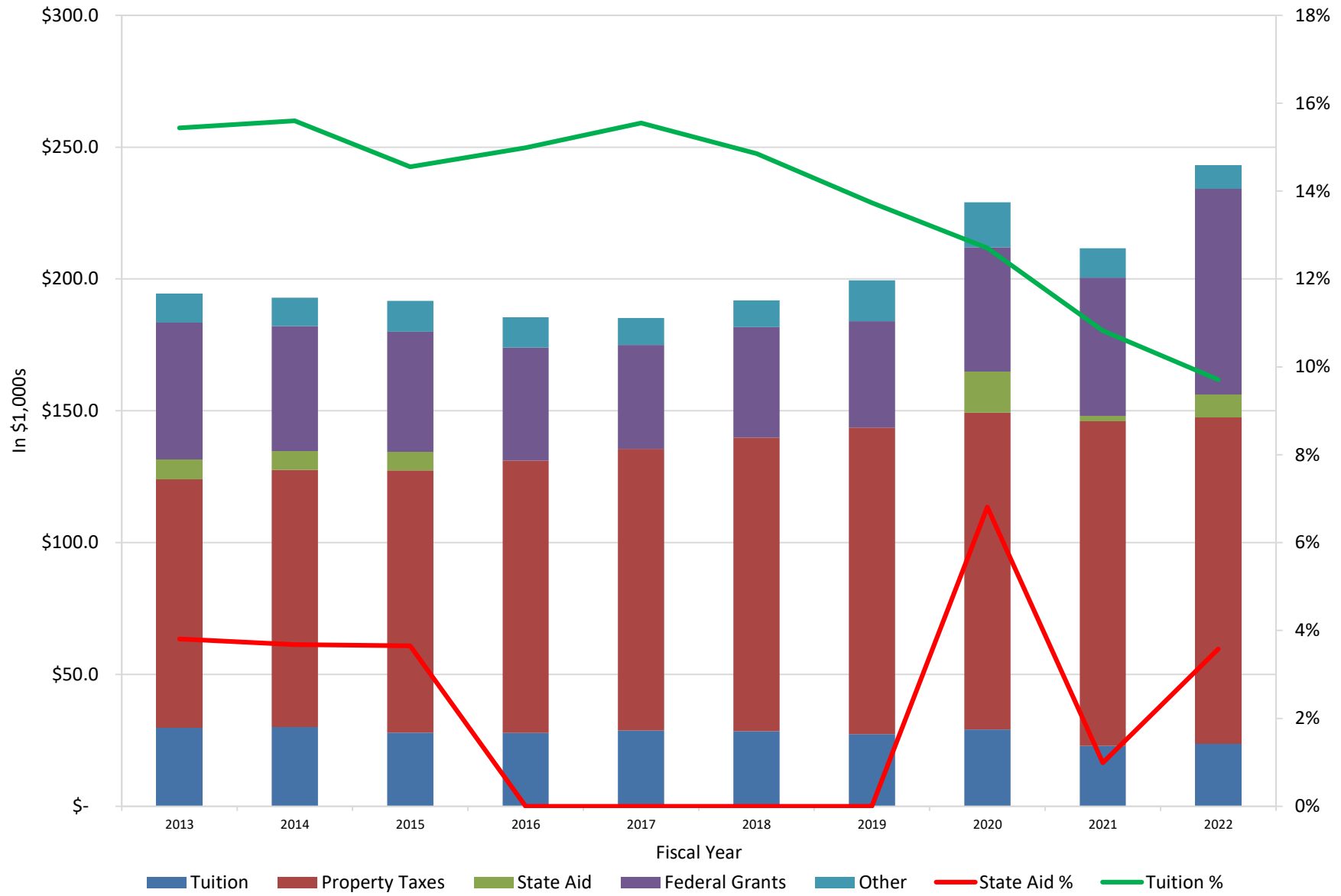


Financial Ratios vs. Benchmarks (>1.0 is above the low benchmark)

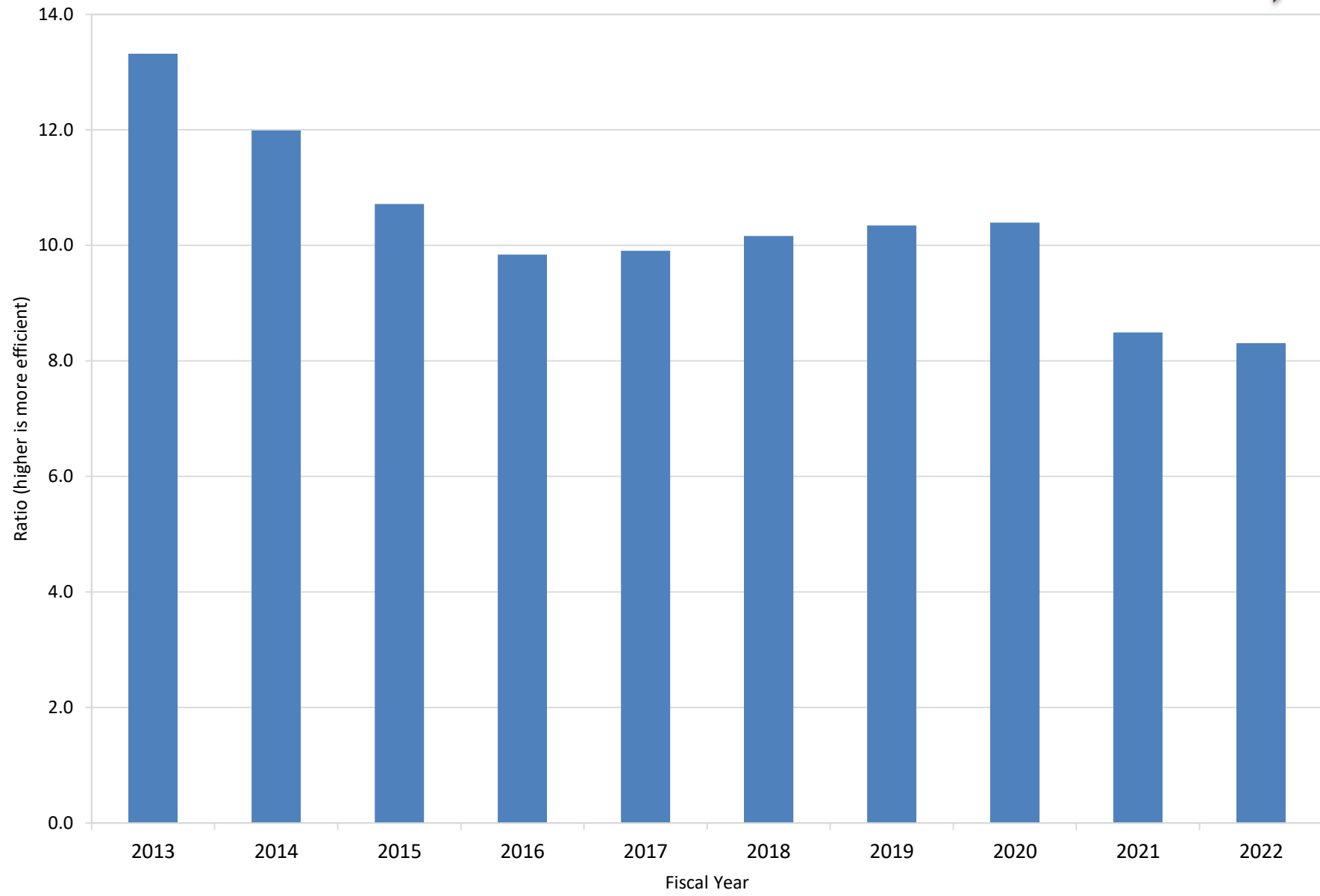


■ Composite Financial Index - with GASB 68
 ■ Ratio Benchmark
 ■ Primary Reserve
 ■ Net Operating
 ■ Return on Net Assets
 ■ Viability

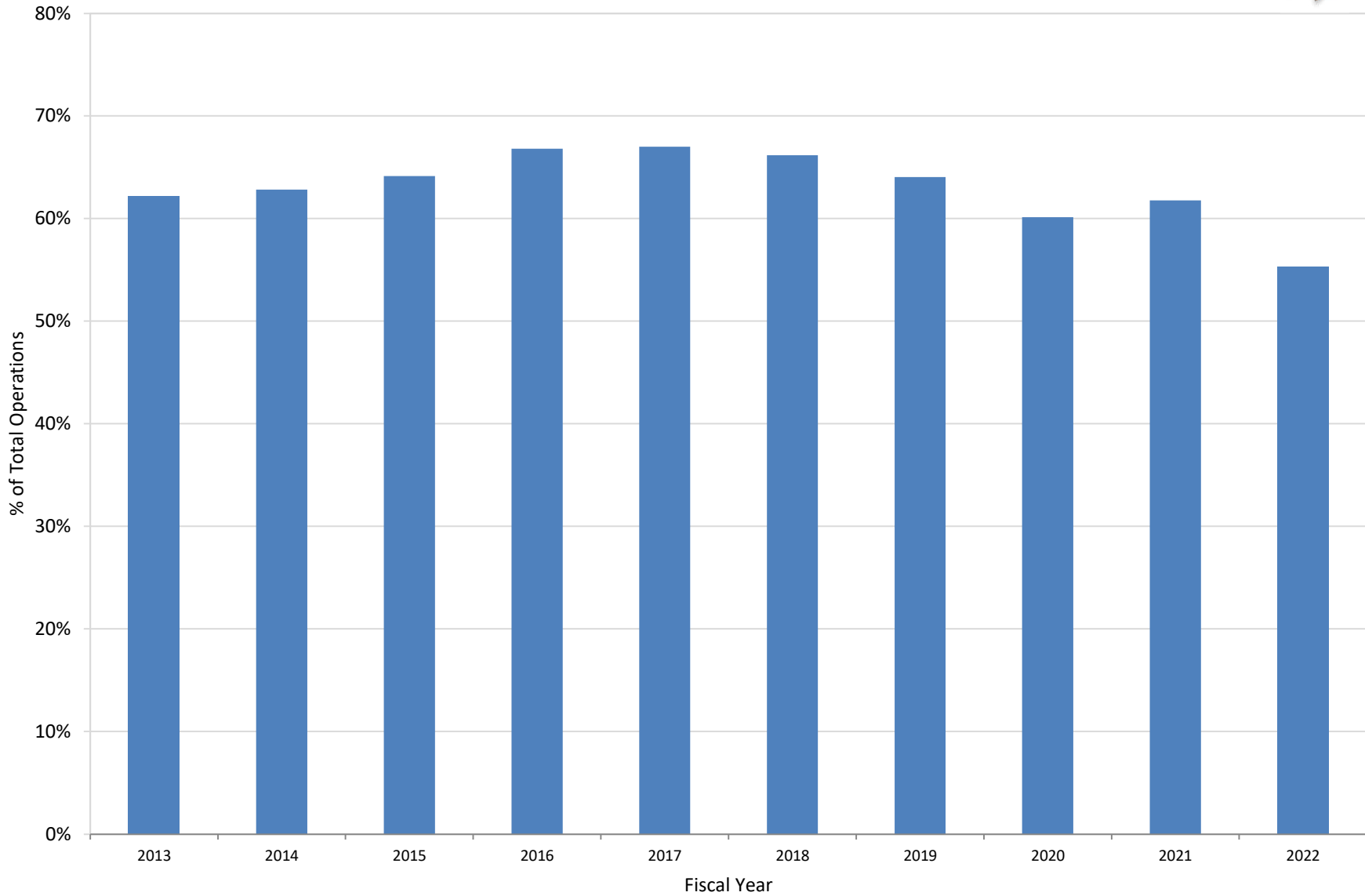
Revenues by Type (\$mil) and % of Total for Tuition and State Aid



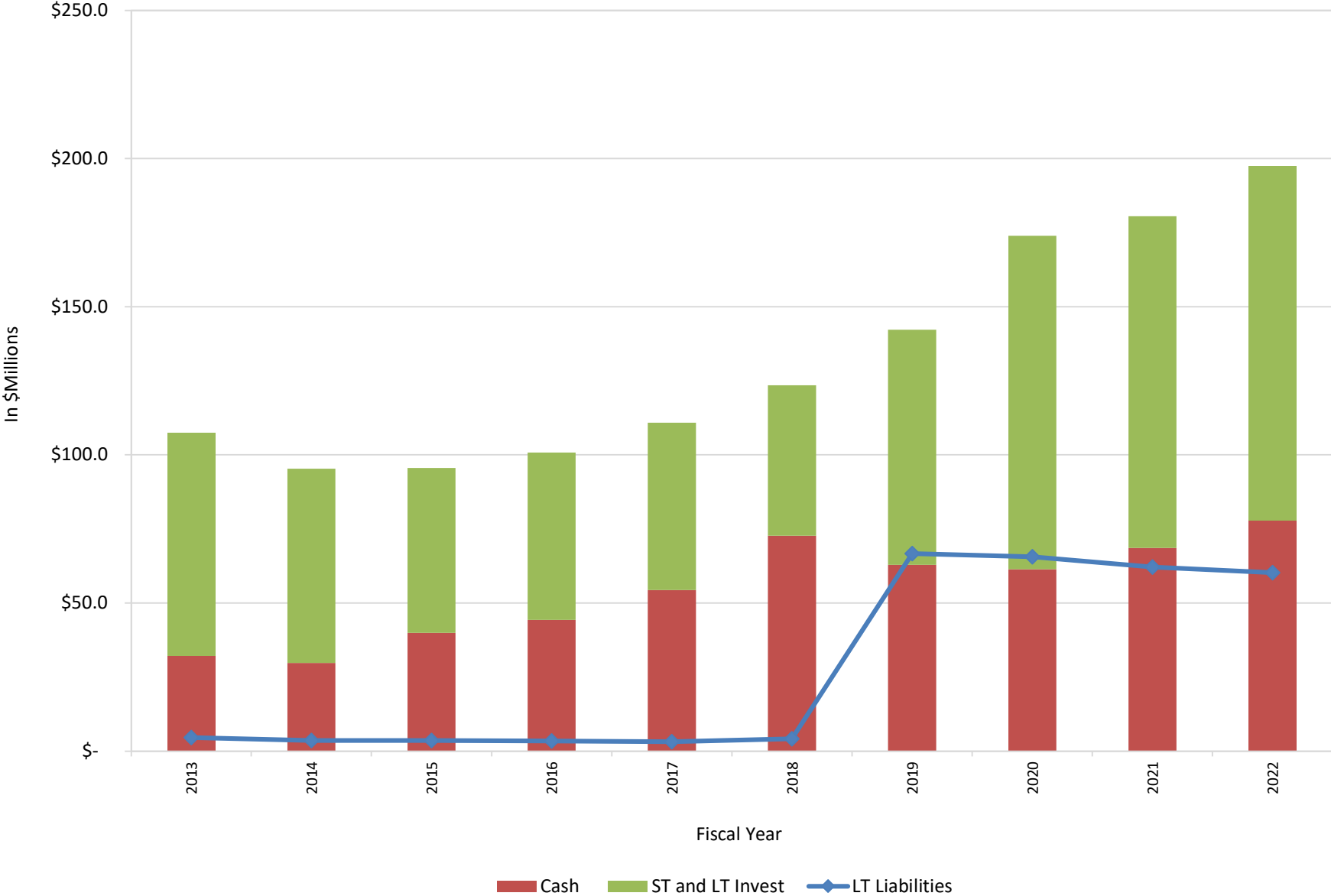
FTSE per FT Employee



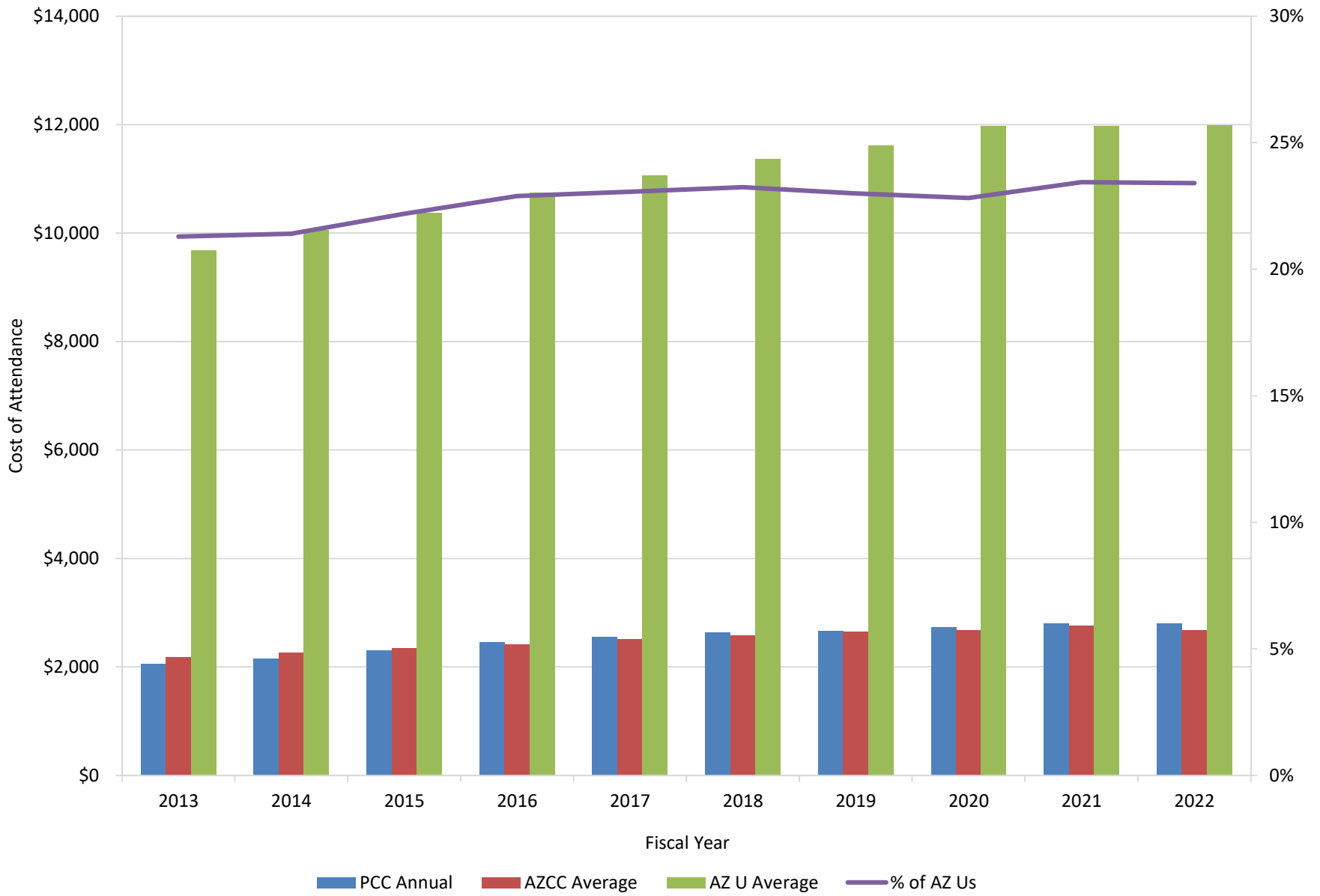
Personnel Costs as % of Total Operations



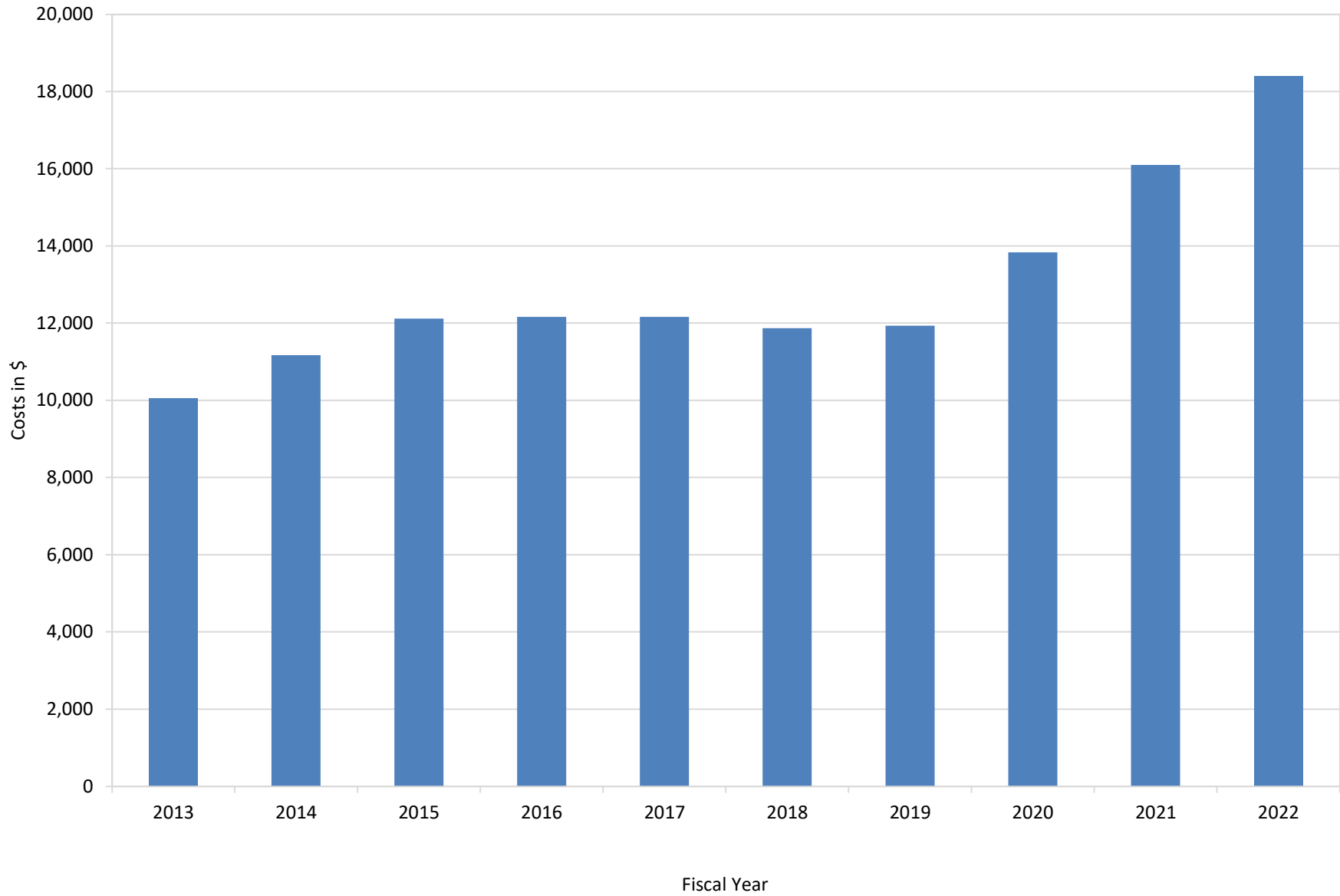
Cash and Investments vs. Long Term Liabilities






Cost of Attendance: PCC vs. Other AZ CCs and the Universities



Total Costs per FTSE



Key

<u>Color</u>	<u>Level of Concern</u>	<u>Direction</u>	<u>Trend Indicator</u>
Red	Significant		Better
Orange	Moderate		Maintain
Green	Minimal to No		Worse