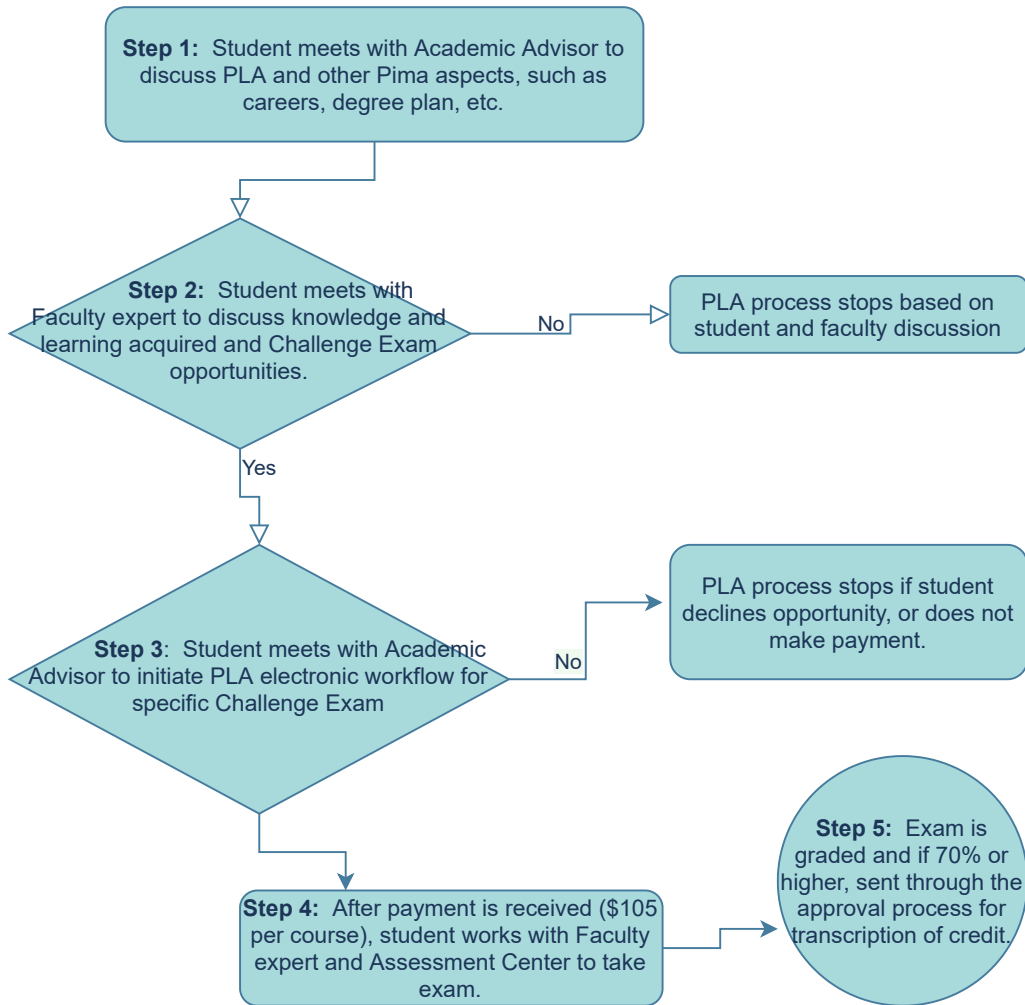


## Challenge Exam



## Challenge Exam

**Step 1:** Student meets with Academic Advisor regarding career interests, including PLA and other Pima aspects

**Step 2:** Student meets with the Faculty expert to discuss knowledge and learning acquired and Challenge Exam options

**Step 3:** Student meets with Academic Advisor to initiate PLA electronic workflow for specific Challenge Exam, approves the request, and pays \$105 per class/exam applied to their MyPima account

**Step 4:** After payment is received and applied to the student account, student works with the Faculty expert and Assessment Center to take the exam

**Step 5:** The Discipline Coordinator grades the exam (i.e. faculty expert) and Approves/Denies, then forwards to Dean for Review and Approval/Denial, and electronic submission to the Registrar's Office for transcription of credit.