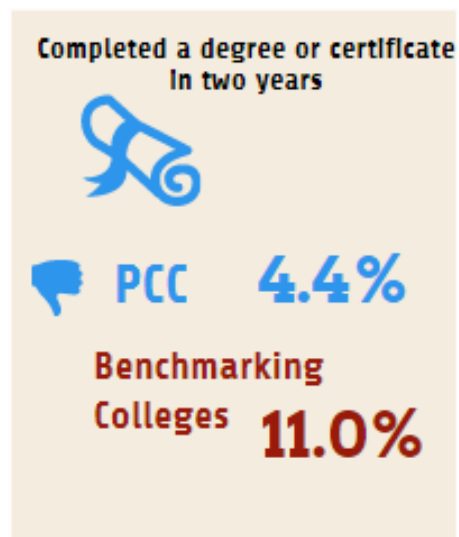
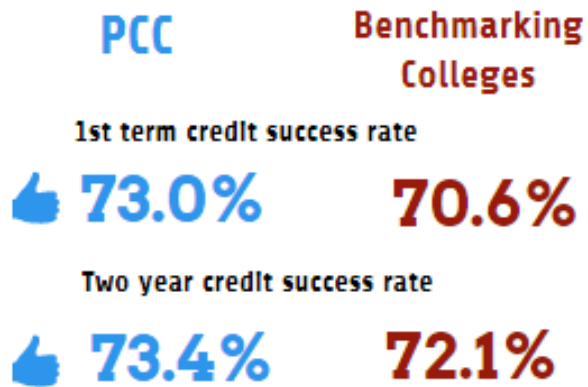
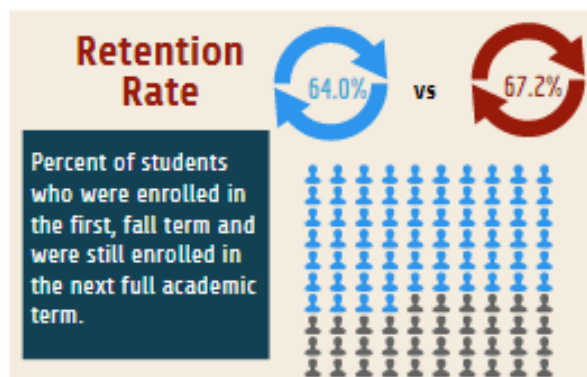
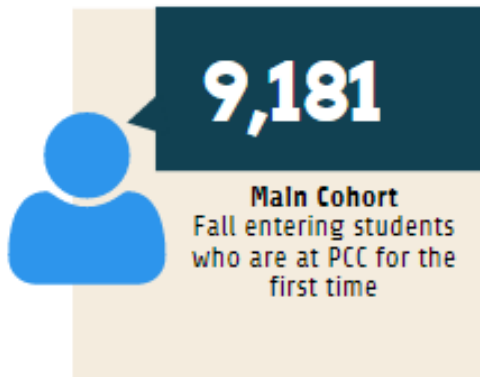


Voluntary Framework of Accountability 2009 Main Cohort-2 year progress



IPEDS Fall 2009 Cohort*
100% completion rate: 6%
150% completion rate: 10%
200% completion rate: 10%
*Fall entering, first-time, full-time degree seeking students



PimaCommunityCollege

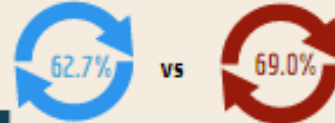
Voluntary Framework of Accountability 2013 Main Cohort-2 year progress



6,798

Main Cohort
Fall entering students
who are at PCC for the
first time

**Retention
Rate**



Percent of students
who were enrolled in
the first, fall term and
were still enrolled in
the next full academic
term.



PCC

**Benchmarking
Colleges**

1st term credit success rate

70.7%

70.1%

Two year credit success rate

73.0%

73.4%

Most recent IPEDS cohort (Fall 2011)

100% completion rate: 6%

150% completion rate: 11%

200% completion rate: 15%

*Fall entering, first-time, full-time degree seeking students.

**Completed a degree or certificate
In two years**



PCC

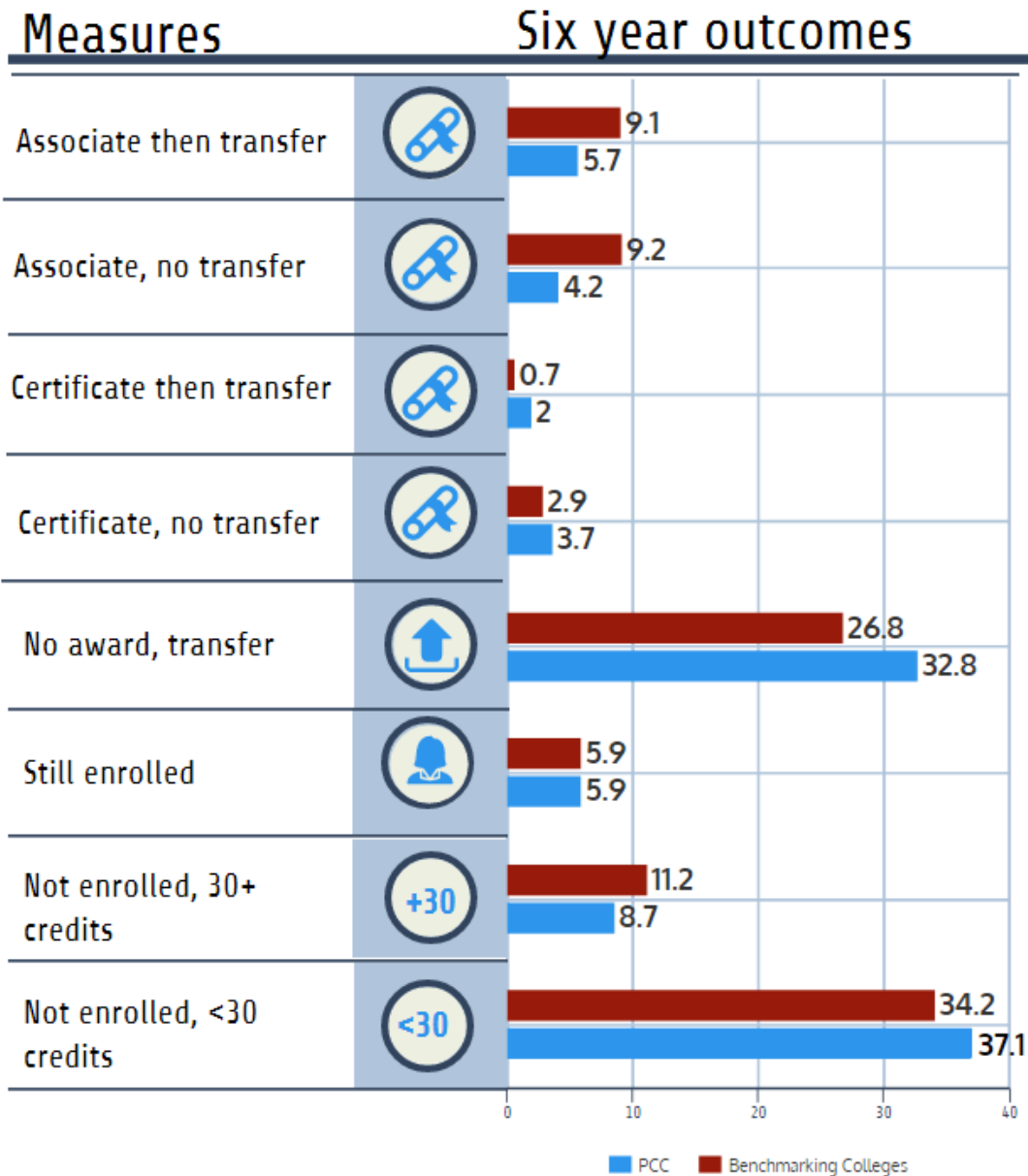
5.2%

**Benchmarking
Colleges**

13.2%

Institutional Research, Planning and Effectiveness

Voluntary Framework of Accountability 2009 Main Cohort-6 year outcomes



IPEDS Fall 2009 Cohort*: Still enrolled, no award (transfer), total earned awards** are 25.7%, 15.0% and 10.2% respectively.

*Fall entering, first-time, full-time degree seeking students.

**VFA total earned awards =Associate degrees and certificates.

Source:<http://vfa.aacc.nche.edu/>