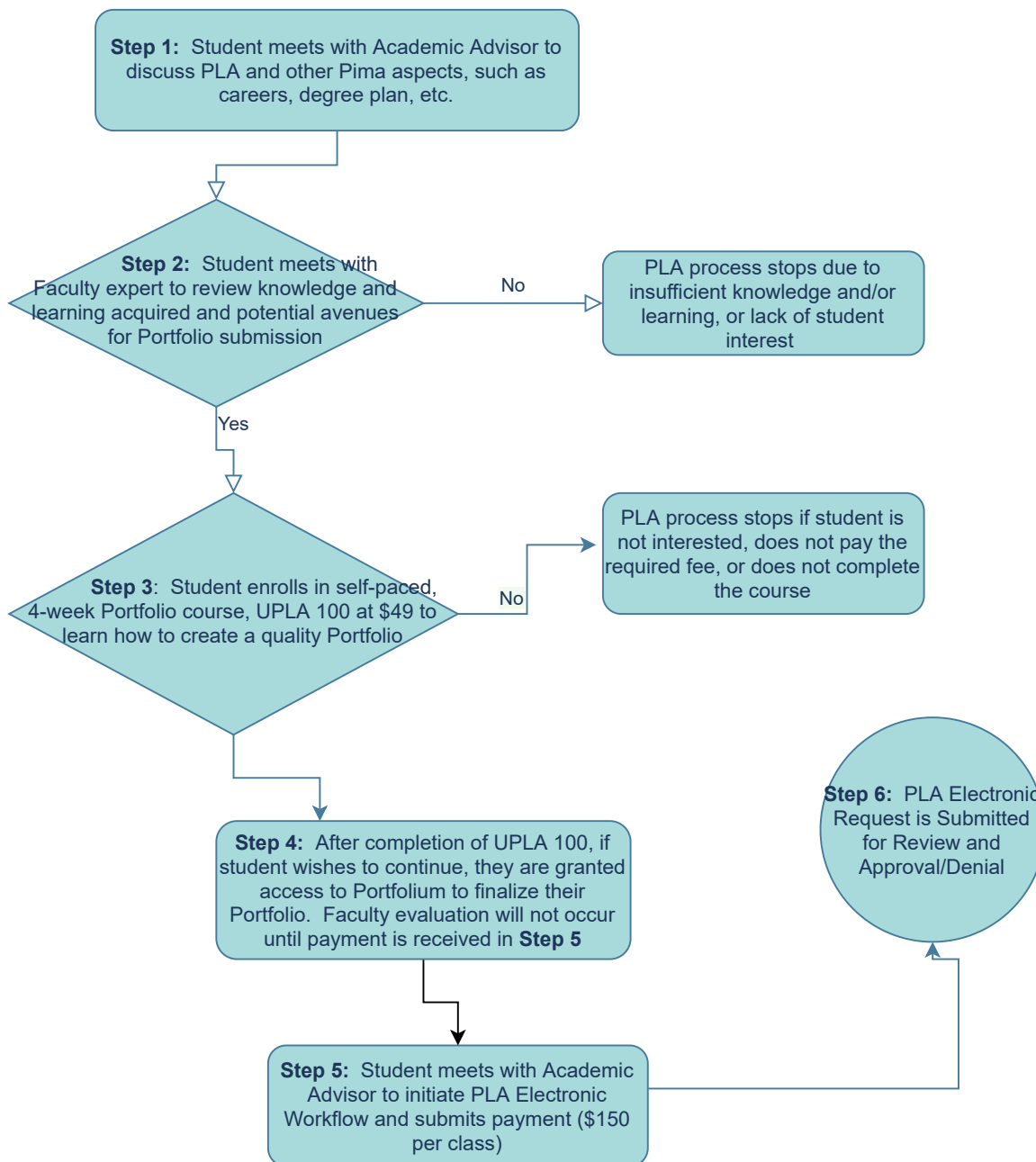


## Portfolio Assessment



## Portfolio Assessment

- Step 1:** Student meets with Academic Advisor regarding career interests, including PLA and other Pima aspects
- Step 2:** Student meets with Faculty expert to discuss knowledge and learning acquired and potential classes for Portfolio creation
- Step 3:** Student enrolls in a self-paced, 4-week, fully online course, UPLA 100 at a one-time cost of \$49 to learn how to create a quality portfolio for evaluation
- Step 4:** After completion of UPLA 100, student is granted access to Portfolium to finalize their Portfolio
- Step 5:** If student wishes to submit a Portfolio for evaluation, meet with Academic Advisor to initiate PLA Electronic Workflow and submit payment of \$150 per class
- Step 6:** PLA Electronic Workflow is initiated with Academic Advisor Submission and Approval/Denial, Student Review and Approval/Denial, Discipline Coordinator Review (i.e. faculty expert) and Approval/Denial, Dean Review and Approval/Denial, and electronic submission to the Registrar's Office for transcription of credit.