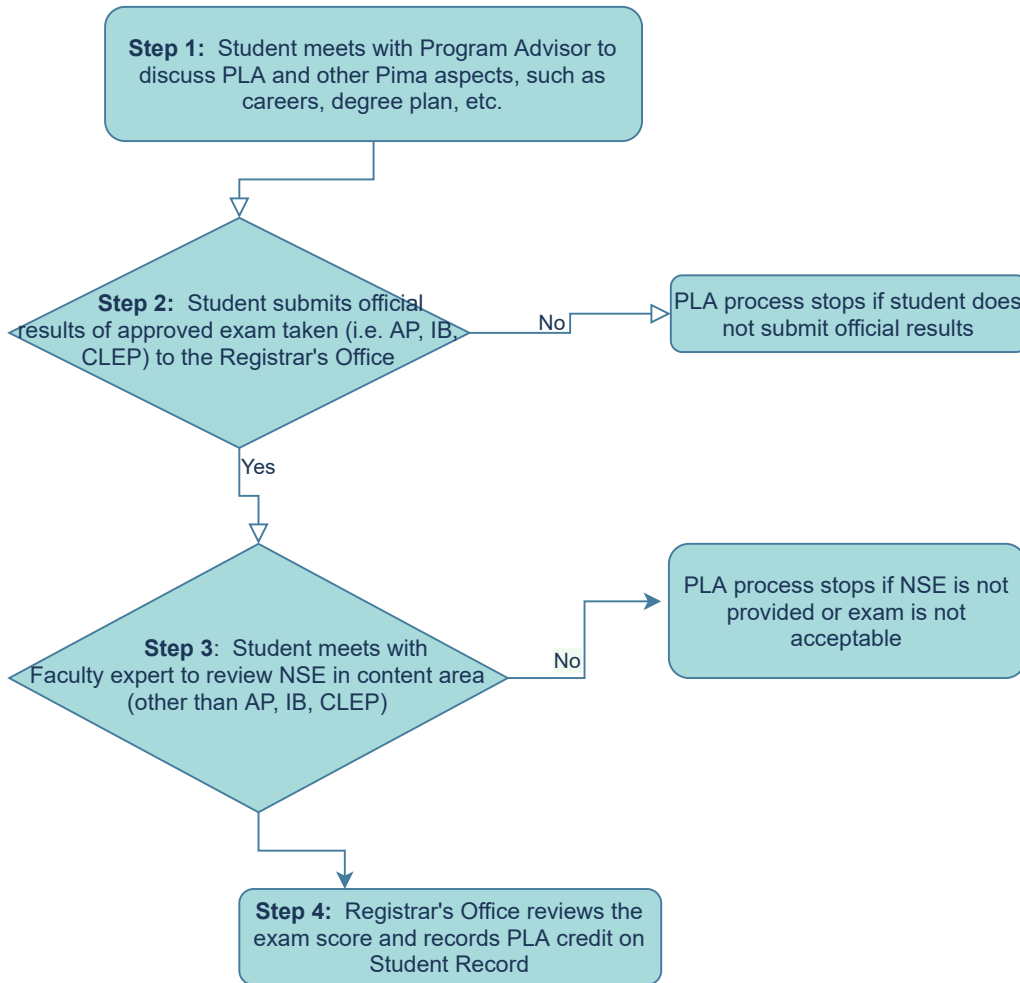


## National Standardized Exam (NSE)



## National Standardized Exam (NSE)

**Step 1:** Student meets with Program Advisor regarding career interests, including PLA and other Pima aspects

**Step 2:** Student submits official exam results, such as AP, IB, and CLEP to the Registrar's Office for review

**Step 3:** Student meets with Faculty expert to discuss and review NSE exam taken in content area, if other than AP, IB and CLEP

**Step 4:** The Registrar's Office will review the exam score, and if an acceptable score, record PLA credit on the Student Record